



Flexential wholesale tour guide



Contents

Corporate overview

Flexential Interconnection

Wholesale tour guides

Atlanta - Alpharetta
Atlanta - Douglasville 1
Atlanta - Douglasville 2
Dallas - Plano
Denver - Englewood
Denver - Parker
Las Vegas - North
Minneapolis - Chaska
Nashville - Franklin
Philadelphia - Collegeville
Portland - Hillsboro 2
Portland - Hillsboro 3
Portland - Hillsboro 4
Portland - Hillsboro 5
Portland - Hillsboro 6



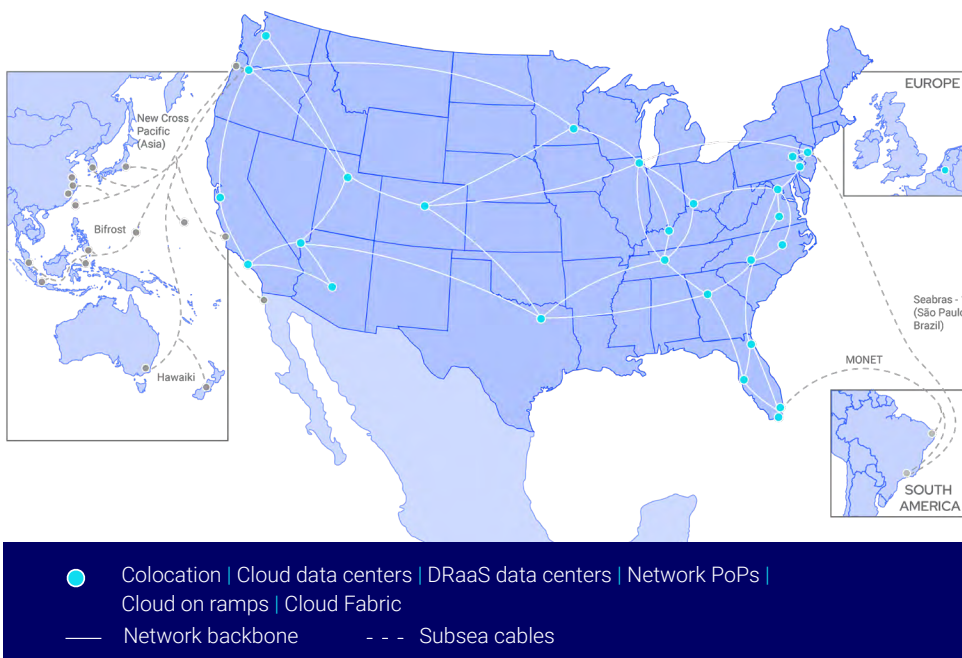
FlexAnywhere[®] Platform

Solve complex infrastructure requirements with colocation and cloud solutions tailored to meet your evolving needs.

The intricacy and cost associated with integrating, managing and protecting legacy applications, on-premise and cloud-based environments can be overwhelming.

The Flexential consultative approach addresses your specific demands by tailoring our comprehensive colocation, cloud, data protection, managed and professional services portfolio to deliver optimal, long-term performance for your critical applications.

Highly connected, national platform



For an interactive map of our data centers, cloud regions, DRaaS regions, PoPs and cloud on ramps go to flexential.com

Broad reach and capabilities

100 Gbps

Network backbone

3 Million+

Sq. ft. footprint

330 MW

Critical load
UPS Capacity

370+

On-net carriers

18

US markets

40+

Data centers

Why Flexential?

With 40+ data centers across 18 markets, the Flexential highly connected, national data center platform and full suite of colocation, interconnection, cloud, data protection, and professional services, flex to empower our customers' evolving infrastructure requirements.

End-to-end data center solutions portfolio



Colocation

Benefit from secure, highly efficient data centers offering high-density power capabilities and geographic proximity for the utmost control of distributed architectures.



Interconnection

Access hundreds of carriers, hyperscale cloud providers and hybrid IT networks as well as 100 Gbps network backbone to enable your interconnection needs.



Cloud

Solve complex hybrid IT challenges and support long-term business growth by implementing private, public and hybrid cloud solutions.



Data protection

Protect your data, applications and infrastructure from disruptions using disaster recovery solutions as unique as your business requirements.



Professional Services

Accelerate your IT journey through consultative, end-to-end engagements that address the most complex infrastructure, security, and compliance challenges.

You're in good company

FRONTIER



AutoNation

HITACHI
Inspire the Next

tyco

 **noodles**
& COMPANY

 **McAfee**

COX

QUESTBLUE



 | American First Finance



Flexential Interconnection

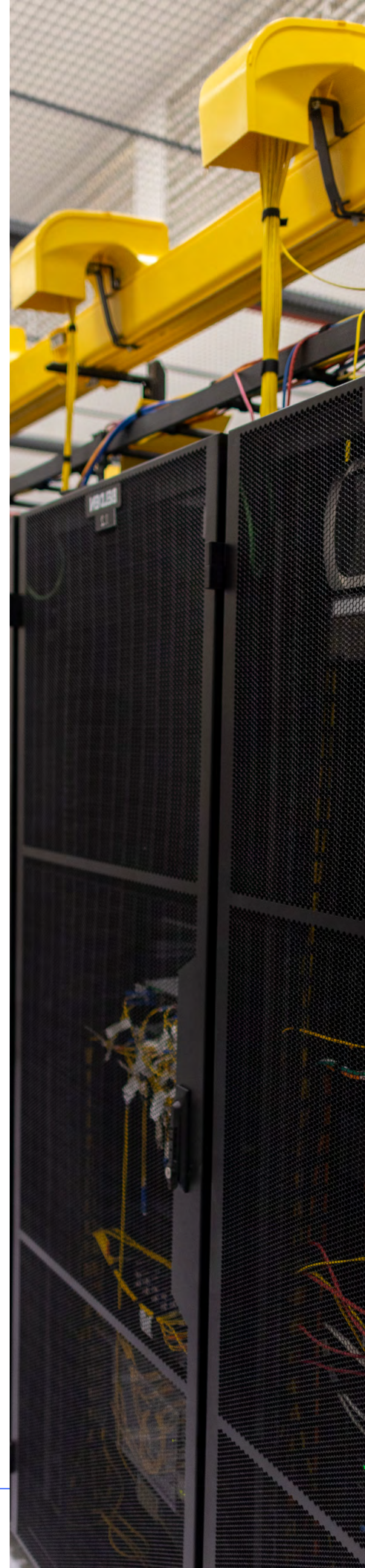
Create a powerful ecosystem of clouds, partners, and customers with interconnection services

Today's IT leader is juggling more complexity than ever before. Concerns over security, latency, performance, and cost combined with the reality of supporting an explosion of cloud-based applications, next generation technologies, disconnected systems of compute, storage, and databases that do not communicate with one another or provide scalability are common and painful business challenges.

In order to ensure optimal performance and long-term viability, savvy enterprises are shifting to a hybrid IT approach that matches workload and application requirements with the appropriate infrastructure solution. Further success is achieved by moving workloads closer to users to reduce latency and provide a consistent customer experience.

To optimize this hybrid approach, you need a partner with the physical infrastructure and connectivity options to seamlessly support today's requirements, the flexibility to accommodate future growth and the expertise to integrate, manage and protect your legacy applications, on-premise, colocated, and cloud-based environments.

Flexential Interconnection delivers scalable, industry-leading interconnection options through the combination of an industry-leading 100Gbps network backbone, hundreds of carriers, subsea cables, and low-latency connections to cloud providers to create an ecosystem that delivers secure and reliable connectivity options.



Optimize your corporate network

Leverage Flexential Interconnection to connect with cloud and software-as-a-service (SaaS) providers, customers, and partners, while increasing performance and reducing latency. Providing a distributed network approach allows businesses to access the breadth of the Flexential portfolio of services including data protection and managed services.

Flexential Fabric—An advanced, software-defined interconnection solution that enables direct, secure connectivity to distributed infrastructure and digital ecosystems through a single port.

DCI and Interconnection Mesh—Flexential flexible transport solutions, including Data Center Interconnect (DCI) and Interconnection Mesh enable connectivity between data centers on a 100Gbps backbone, connecting you to CSPs, peering exchanges, carriers and partners.

Cloud Fabric—Flexential Cloud Fabric provides a secure, Layer 2 private network transport to AWS, Azure, Google, and Oracle via a single port connection managed through the Cloud Fabric Portal.

IP Bandwidth—Scalable from 10 Mbps up to 40 Gbps across all Flexential locations—and up to 100 Gbps at select sites—our IP bandwidth service enables you to seamlessly manage peak traffic and workload demands.

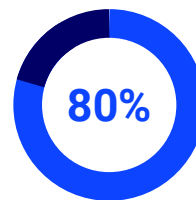
Cross Connects—Flexential low-latency, reliable, point-to-point connections help you reach the carriers, clouds, and IT service providers your business requires.

Network Hub—Bring connectivity closer to end users with geographically distributed locations that satisfy latency requirements and provide better application performance.

Flexential Marketplace—A digital B2B interconnection hub built into the Flexential Xperience Portal (FXP) that simplifies how you discover, connect, and transact with an ecosystem of as-a-service providers, enterprises, and cloud platforms colocated across Flexential data centers.

Connect anywhere

The centerpiece of Flexential Interconnection is our high-speed, private, secure network backbone. Our backbone is built to connect all of the data centers in our portfolio, as well as strategic carrier hotels. This means that once your data is on our network, it's on a private dedicated path to its destination. Your data does not ride over the internet. This provides security and increased performance because the packets aren't sharing space with unrelated traffic such as social media, streaming content, and malicious internet traffic. Flexential Interconnection is fast, simple, and secure.

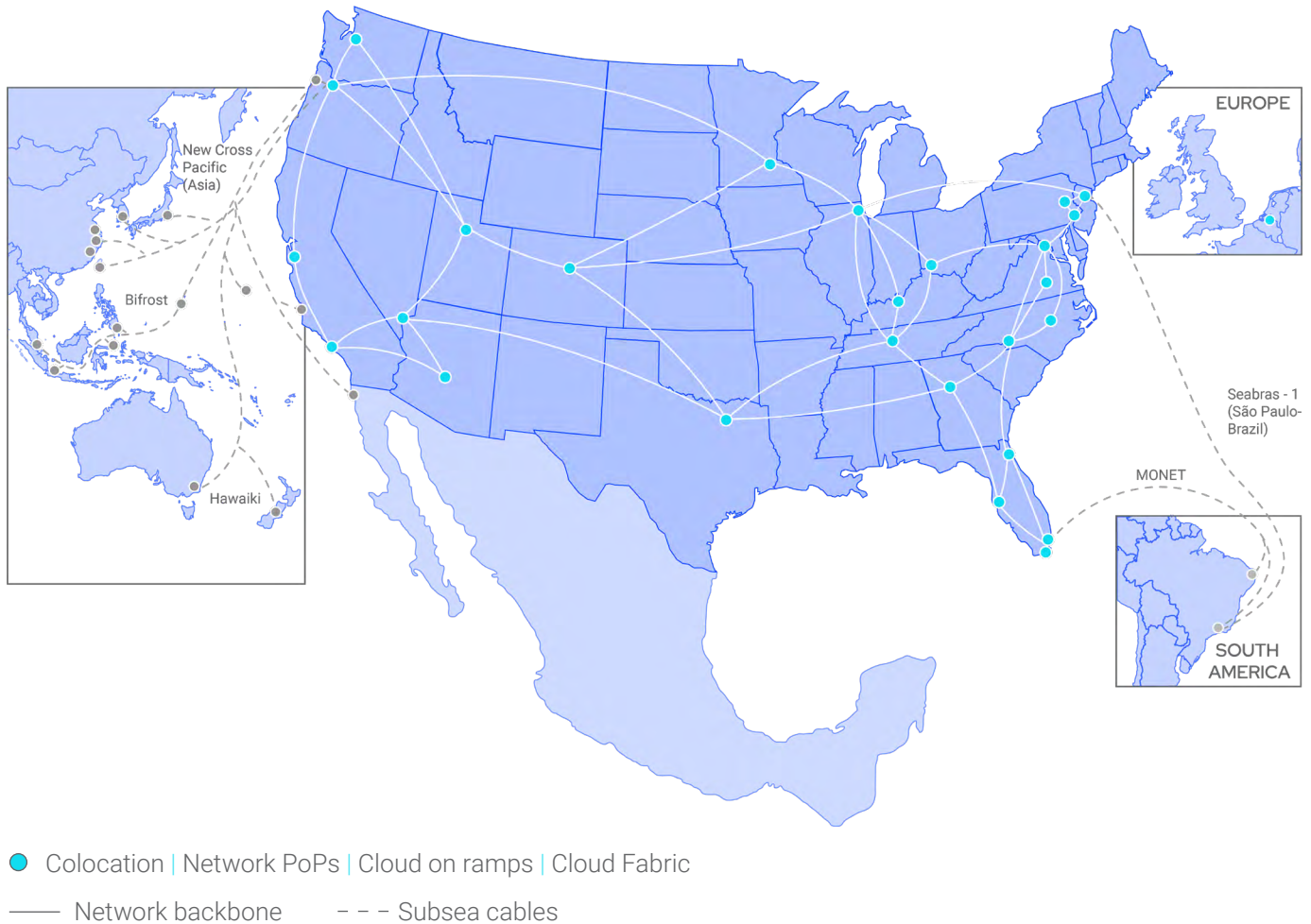


More than **80% of enterprises** now run **hybrid or multi-cloud environments** — making private, high-performance interconnection essential for secure and consistent data movement.

Benefits

- » Reduce latency and improve performance by distributing workloads and bringing applications closer to the user
- » Modernize your network through technology enablement
- » Scalable data center footprints and connectivity
- » Private, secure, and reliable connectivity from the local edge to the cloud, and everything in between
- » Optimize costs by placing data adjacent to the compute resources for faster more efficient workload processing
- » Simple to build, scale, and deploy additional locations, capacity, and services, through an ecosystem of space, services, and interconnection designed to work together seamlessly

Flexential Interconnection access points



Position workloads and data where they're needed

The growth of enterprise network-based applications, the Internet of Things, and Big Data are driving the next technological evolution. As the amount of data generated through these technologies increases exponentially, your connectivity and infrastructure needs will continue to change. Flexential Interconnection provides the flexibility to dynamically adjust your IT infrastructure by delivering the tools to move data and compute to the edge, easily integrate new technologies, and elastically adjust capacity.

Flexential is leading the way with rich, secure and broad connectivity to enable your success.

[Learn More](#)





Atlanta – Alpharetta data center



Flexential provides exceptional colocation, connectivity and compliance IT solutions in the heart of Alpharetta's tech corridor, with a data center complex featuring 2N power redundancy and N+1 cooling redundancy.

We offer premium connectivity, including an industry-leading 100 gigabit network backbone - scalable to 400 Gbps, carrier hotel connectivity, Layer 2 access to 80 on-net carriers, proactive Layer 3 and Layer 4 distributed denial of service protection and a 100% network and bandwidth uptime commitment.

Security and compliance support are part of the package. Our physical security features include, among others: 4-zone security access, biometric scanners and monitored security cameras and intercom systems. The site is compliant with several industry and regulatory standards. We are among a select few in the industry that can provide a certified, protected environment to support compliance with PCI DSS.

Quick facts

- 142,475-square-foot data center footprint
- 6 MW critical load UPS capacity; 2N UPS redundancy
- N+1 cooling redundancy
- 100% SLA on power, network and bandwidth
- 100 Gbps network backbone, scalable to 400 Gbps
- 4-zone security access

Additional features

- Migration and capacity planning
- Meeting room and dedicated work areas for customer use
- Office lease space available
- Remote hands support available
- Business continuity and disaster recovery services, solutions and support available
- Public, private, hybrid and compliant cloud solutions, as well as cloud recovery and dedicated servers, available
- Professional services including migration, security and risk management, assessments and audits, as well as performance and network architecture support, available

Facility specifications

Power & cooling

- 2N UPS redundancy
- 6 MW critical load UPS capacity
- 150 W/SF power density
- N+1 cooling redundancy
- Hot/cold aisle configuration
- 100% power SLA

Compliance

- PCI DSS compliant site
- Annual, independent audits for SOC 1 Tier Type II, SOC 2 Type II, SOC 3; NIST 800-53; ITAR: SSAE 18
- HITRUST and PCI certification services available
- Regulatory and standards compliance assessment, analysis, consulting and planning services available

24/7 Security

- Round-the-clock security and technical staff
- Dual-factor authentication access
- Biometric scanners
- 4-zone security access
- Monitored security cameras and intercom system
- Cage security cameras available

Connectivity

- One unified fabric offering on-demand provisioning of connectivity services
- Connections to strategic carrier hotels
- 100Gbps network backbone
- Access to a rich ecosystem of carriers, service providers and cloud providers reachable from any data center
- IP transit service built on a blend of premium Tier I carriers and including basic DDoS scrubbing protection
- Point to point and mesh services available to connect Flexential data centers

[Request a Tour](#)

Flexential solutions portfolio



Colocation



Interconnection



Cloud



Data Protection



Professional Services



Atlanta – Douglasville 1 data center



Business today needs to serve an increasingly distributed user base and satisfy demanding customer expectations. Regional hubs close to the airport provide the capacity and connectivity needed to supply superior application performance.

Located just 16 miles from Hartsfield Jackson International Airport and 16 miles from downtown Atlanta, Flexential Atlanta-Douglasville 1 data center provides ~205,000 sq. ft. utilizing our newest, most efficient, and sustainable Gen 5 design.

As organizations increasingly use multiple clouds, distributed and edge workload placements, and they more heavily rely on digital engagement with their ecosystem (customers, partners, suppliers, and employees), reliable, low latency networks and interconnections become even more critical to basic business operations and enabling good user experiences.

- Atlanta-Douglasville 1 will get you closer to your users in the Southeast and Improve response times and create predictable performance for distributed users.
- Provide a secure and reliable network to the core data centers and deliver in a standard, repeatable fashion.
- Improve my network reliability to your cloud service providers to give end users better performance and reduce single points of failure on the network.

The Atlanta metro area has become a magnet for technology and innovation driven by advancements in data-centric sectors from finance and mobility to logistics, retail, and healthcare IT. This market convergence creates limitless growth potential.

Quick facts

- 204,700 SF building
- Concrete tilt-wall construction
- Rated crash barriers at all entrances
- 150,000 SF of data halls
- Dedicated 30,000 SF suite design
- 16-foot data hall ceilings
- High efficiency LED lighting
- 22.5 MW of critical power
- Water free design (WUE = 0)
- Target PUE of 1.4
- Utilizes new Flexential Gen 5 design

Additional features

- Migration and capacity planning
- Meeting room and dedicated work areas for customer use
- Office lease space available
- Remote hands support available
- Business continuity and disaster recovery services, solutions and support available
- Public, private, hybrid and compliant cloud solutions, as well as cloud recovery and dedicated servers, available
- Professional services including migration, security and risk management, assessments and audits, as well as performance and network architecture support, available

Facility specifications

Power & cooling

- 22.5 MW of critical power
- 4.5 MW per Data Hall
- Distributed redundant topology (4:3)
- 415V and 208V delivery
- 5-minute battery reserve
- 50 MW of standby power generation
- Primary utility power provided by Georgia Power
- 25 MW of total cooling
- Ultra-efficient cooling design to optimize PUE
- Day one support for all forms of liquid cooling
- Day one support for high-density environments

Compliance

- PCI DSS compliant site
- Annual, independent audits for SOC 1 Type II, SOC 2 Type II, SOC 3; NIST 800-53; ITAR: SSAE 18
- HITRUST and PCI certification services available
- Regulatory and standards compliance assessment, analysis, consulting and planning services available

Location

- 1700 N. River Rd, Douglasville, GA 30122
- 16 miles to Atlanta Hartsfield International Airport
- 17 miles to downtown Atlanta

24/7 Security

- Round-the-clock security and technical staff
- Dual-factor authentication access
- Biometric scanners
- 5-zone security access
- Monitored security cameras and intercom system
- Cage security cameras available

Connectivity

- One unified fabric offering on-demand provisioning of connectivity services
- Connections to strategic carrier hotels
- 100Gbps network backbone
- Access to a rich ecosystem of carriers, service providers and cloud providers reachable from any data center
- IP transit service built on a blend of premium Tier I carriers and including basic DDoS scrubbing protection
- Point to point and mesh services available to connect Flexential data centers

[Request a Tour](#)

Flexential solutions portfolio



Colocation



Interconnection



Cloud



Data Protection



Professional Services



Atlanta – Douglasville 2 data center



Building to meet the increasing demand of the data center market

Atlanta – Douglasville 2 sits on the campus next door to the original Douglasville facility. This new build has 8 - 24,000 sq. ft. data halls each delivering 4.5 MW.

As organizations increasingly use multiple clouds, distributed and edge workload placements, and they more heavily rely on digital engagement with their ecosystem (customers, partners, suppliers, and employees), reliable, low latency networks and interconnections become even more critical to basic business operations and enabling good user experiences.

Business today needs to serve an increasingly distributed user base and satisfy demanding customer expectations. Regional hubs close to the airport provide the capacity and connectivity needed to supply superior application performance.

Located just 16 miles from Hartsfield Jackson International Airport and 16 miles from downtown Atlanta, Flexential Atlanta-Douglasville 2 data center provides 358,000 sq. ft. utilizing our newest, most efficient, and sustainable data center design adding an additional 36 MW to this data center campus.

Atlanta-Douglasville 2 will get you closer to your users in the Southeast, improve response times and create predictable performance for distributed users.

- Utilize the innovative liquid cooling design inherent in the facility to create the most efficient design for your deployment.
- Provide a secure and reliable network to the core data centers and deliver in a standard, repeatable fashion.
- Improve network reliability to your cloud service providers to give end users better performance and reduce single points of failure on the network.

The Atlanta metro area has become a magnet for technology and innovation driven by advancements in data-centric sectors from finance and mobility to logistics, retail, and healthcare IT. This market convergence creates limitless growth potential.

Quick Facts

- 358,000 SF building
- 36 MW of critical power
- Concrete tilt-wall construction
- Rated crash barriers at all entrances
- 16-foot data hall ceilings
- High efficiency LED lighting
- Water free design (WUE = 0)
- Target PUE of 1.4

Additional features

- Migration and capacity planning
- Meeting room and dedicated work areas for customer use
- Office lease space available
- Remote hands support available
- Business continuity and disaster recovery services, solutions and support available
- Public, private, hybrid and compliant cloud solutions, as well as cloud recovery and dedicated servers, available
- Professional services including migration, security and risk management, assessments and audits, as well as performance and network architecture support, available

Facility specifications

Power & cooling

- 36 MW of critical power
- 4.5 MW per Data Hall
- Distributed redundant topology (4:3)
- 415V and 208V delivery
- 5-minute battery reserve
- Approximately 50 MW
- Primary utility power provided by Georgia Power
- 25 MW of total cooling
- Ultra-efficient cooling design to optimize PUE
- Day one support for high-density environments
- Support for all forms of liquid cooling

Compliance

- PCI DSS compliant site
- Annual, independent audits for SOC 1 Tier Type II, SOC 2 Type II, SOC 3; NIST 800-53; ITAR: SSAE 18
- HITRUST and PCI certification services available
- Regulatory and standards compliance assessment, analysis, consulting and planning services available

Location

- 1750 N. River Rd,
Douglasville, GA 30122
- 16 miles to Atlanta Hartsfield International Airport
- 17 miles to downtown Atlanta

24/7 Security

- Round-the-clock security and technical staff
- Dual-factor authentication access
- Biometric scanners
- 5-zone security access
- Monitored security cameras and intercom system
- Cage security cameras available

Connectivity

- One unified fabric offering on-demand provisioning of connectivity services
- Connections to strategic carrier hotels
- 100Gbps network backbone
- Access to a rich ecosystem of carriers, service providers and cloud providers reachable from any data center
- IP transit service built on a blend of premium Tier I carriers and including basic DDoS scrubbing protection
- Point to point and mesh services available to connect Flexential data centers

[Request a Tour](#)

Flexential solutions portfolio



Colocation



Interconnection



Cloud



Data Protection



Professional Services



Dallas – Plano data center



Our Generation 4 Dallas - Plano data center is purpose-built to accommodate power densities of over 1,500 watts per square foot, with 24-foot ceilings, proprietary and highly efficient cooling units and a pressurized raised floor. With a data center footprint of more than 260,000 square feet, we offer plenty of room to grow with you.

Our Dallas - Plano data center also offers premium connectivity, including an industry-leading 100 gigabit network backbone -- scalable to 400 Gbps, carrier hotel connectivity, Layer 2 access to 80 on-net carriers, proactive Layer 3 and Layer 4 distributed denial of service protection and a 100% network and bandwidth uptime commitment.

This site also is certified for compliance with several industry and regulatory standards, including the HITRUST CSF and PCI DSS. We are among a select few in the industry that can make this claim and provide a certified, protected environment to support your compliance requirements and security needs.

Quick facts

- 261,425-square-foot data center footprint
- 18 MW critical load UPS capacity; Distributed Redundant 4:3 UPS
- N+1 cooling redundancy
- 100% SLA on power
- 100 Gbps network backbone, scalable to 400 Gbps
- 6-zone security access

Additional features

- Migration and capacity planning
- Meeting room and dedicated work areas for customer use
- Office lease space available
- Remote hands support available
- Business continuity and disaster recovery services, solutions and support available
- Public, private, hybrid and compliant cloud solutions, as well as cloud recovery and dedicated servers, available
- Professional services including migration, security and risk management, assessments and audits, as well as performance and network architecture support, available

Facility specifications

Power & cooling

- Distributed Redundant 4:3 UPS
- 18 MW critical load UPS capacity
- 1500 W/SF power density
- N + 1 cooling redundancy
- Hot/cold aisle configuration
- 100% power SLA
- 1.3 PUE rating

Compliance

- HITRUST CSF compliant site
- PCI DSS compliant site
- Annual, independent audits for SOC 1 Tier Type II, SOC 2 Type II, SOC 3; NIST 800-53; ITAR: SSAE 18
- HITRUST and PCI certification services available
- Regulatory and standards compliance assessment, analysis, consulting and planning services available

24/7 Security

- Physical environment, power delivery, generator and diesel fuel infrastructure monitoring
- Round-the-clock security and technical staff
- Dual-factor authentication access
- Biometric scanners
- 6-zone security access
- Monitored security cameras and intercom system
- Cage security cameras available

Connectivity

- One unified fabric offering on-demand provisioning of connectivity services
- Connections to strategic carrier hotels
- 100Gbps network backbone
- Access to a rich ecosystem of carriers, service providers and cloud providers reachable from any data center
- IP transit service built on a blend of premium Tier I carriers and including basic DDoS scrubbing protection
- Point to point and mesh services available to connect Flexential data centers

[Request a Tour](#)

Flexential solutions portfolio



Colocation



Interconnection



Cloud



Data Protection



Professional Services



Denver – Englewood data center



With a data center footprint approaching 250,000 square feet, the Denver - Englewood data center, located in the Denver metropolitan area, is one of the largest single-floor data halls in the world. It has module-redundant UPS power equipment and multiple redundant fiber-optic telecommunication networks. This means your mission-critical data is always available. As a Generation 4 data center, this facility is purpose-built to accommodate power densities of over 1,500 watts per square foot, with 24-foot ceilings, proprietary and highly efficient cooling units and a pressurized raised floor.

With a cloud node on-site and a network backbone of 100 gigabits per second, scalable to 400 Gbps, we are exceptionally equipped to support your IT transformation journey and deliver low latency and high capacity for your mission-critical applications.

Rely on us for Layer 2 access to 80 on-net carriers, proactive Layer 3 and Layer 4 distributed denial of service protection and a 100% network and bandwidth uptime commitment.

If you are in the healthcare industry or if you process credit card payments online, we are here to help secure, manage and maintain compliance. The Denver - Englewood data center is certified for compliance with several industry and regulatory standards, including the HITRUST CSF and PCI DSS.

Quick facts

- 240,549-square-foot data center footprint
- 18 MW critical load UPS capacity; Distributed Redundant 4:3 UPS
- N+2 cooling redundancy
- 100% SLA on power, network and bandwidth
- 4-zone security access

Additional features

- Migration and capacity planning
- Meeting room and dedicated work areas for customer use
- Office lease space available
- Remote hands support available
- Business continuity and disaster recovery services, solutions and support available
- Public, private, hybrid and compliant cloud solutions, as well as cloud recovery and dedicated servers, available
- Professional services including migration, security and risk management, assessments and audits, as well as performance and network architecture support, available

Facility specifications

Power & cooling

- Distributed Redundant 4:3 UPS
- 18 MW critical load UPS capacity
- 1500 W/SF power density
- N + 2 cooling redundancy
- Hot/cold aisle configuration
- 100% power SLA
- 1.3 PUE rating

Compliance

- HITRUST CSF compliant site
- PCI DSS compliant site
- Annual, independent audits for SOC 1 Tier Type II, SOC 2 Type II, SOC 3; NIST 800-53; ITAR: SSAE 18
- HITRUST and PCI certification services available
- Regulatory and standards compliance assessment, analysis, consulting and planning services available

24/7 Security

- Physical environment, power delivery, generator and diesel fuel infrastructure monitoring
- Round-the-clock security and technical staff
- Dual-factor authentication access
- Biometric scanners
- 4-zone security access
- Monitored security cameras and intercom system
- Cage cameras available

Connectivity

- One unified fabric offering on-demand provisioning of connectivity services
- Connections to strategic carrier hotels
- 100Gbps network backbone
- Access to a rich ecosystem of carriers, service providers and cloud providers reachable from any data center
- IP transit service built on a blend of premium Tier I carriers and including basic DDoS scrubbing protection
- Point to point and mesh services available to connect Flexential data centers

[Request a Tour](#)

Flexential solutions portfolio



Colocation



Interconnection



Cloud



Data Protection



Professional Services



Denver – Parker data center



Parker data center is located just one mile from the Flexential Englewood facility. The newest build includes 22.5 MW and 249,000 sq. ft. and sits on 17 acres powered by Core Electric. This purpose-built data center will provide high density colocation and be liquid cooled-ready.

Parker will be located at the corner of Chambers Road and Compark Blvd. about one mile east of Flexential Englewood, located at 8636 S. Peoria St., Englewood, CO.

Flexential Parker puts your data closer to users in the Rockies, improves application response times and create predictable performance for distributed users in regional markets.

Provide a secure and reliable network to core data centers and deliver network hubs in a standard, repeatable fashion.

Improve network reliability to your cloud service providers to give end users better performance and reduce single points of failure on the network.

Denver is technology and innovation driven by advancements in data-centric sectors from finance and mobility to logistics, retail, and healthcare IT. This market convergence creates limitless growth potential.



Additional features

- Migration and capacity planning
- Meeting room and dedicated work areas for customer use
- Office lease space available
- Remote hands support available
- Business continuity and disaster recovery services, solutions and support available
- Public, private, hybrid and compliant cloud solutions, as well as cloud recovery and dedicated servers, available
- Professional services including migration, security and risk management, assessments and audits, as well as performance and network architecture support, available

Quick facts

- 249,000-square-foot data center footprint
- 22.5 MW critical load UPS capacity; Distributed Redundant 4:3 UPS
- N+2 cooling redundancy
- 100% SLA on power, network and bandwidth
- 5-zone security access

Facility specifications

Power & cooling

- 22.5 MW of critical power
- 4.5 MW per Data Hall
- Distributed redundant topology (4:3)
- 415V and 208V delivery
- 5-minute battery reserve
- 55 MW of standby power generation
- Primary utility power provided by Core Electric Cooperative
- 25 MW of total cooling
- Ultra-efficient cooling design to optimize PUE
- Support for all forms of liquid cooling
- Day one support for high-density environments

Compliance

- PCI DSS compliant site
- Annual, independent audits for SOC 1 Tier Type II, SOC 2 Type II, SOC 3; NIST 800-53; ITAR: SSAE 18
- HITRUST and PCI certification services available
- Regulatory and standards compliance assessment, analysis, consulting and planning services available

24/7 Security

- Round-the-clock security and technical staff
- Dual-factor authentication access
- Biometric scanners
- 4-zone security access
- Monitored security cameras and intercom system
- Cage security cameras available

Connectivity

- One unified fabric offering on-demand provisioning of connectivity services
- Connections to strategic carrier hotels
- 100Gbps network backbone
- Access to a rich ecosystem of carriers, service providers and cloud providers reachable from any data center
- IP transit service built on a blend of premium Tier I carriers and including basic DDoS scrubbing protection
- Point to point and mesh services available to connect Flexential data centers

[Request a Tour](#)

Flexential solutions portfolio



Colocation



Interconnection



Cloud



Data Protection



Professional Services



Las Vegas - North data center



With a data center footprint exceeding 111,000 square feet, our North Las Vegas data center features N+1 power and cooling redundancy as well as premium connectivity. Flexential is one of few data center providers with a 100 gigabit network backbone – scalable to 400 Gbps. We also offer Layer 2 access to 80 on-net carriers, proactive Layer 3 and Layer 4 distributed denial of service protection and a 100% network and bandwidth uptime commitment.

Security and compliance support are part of the package. Our Las Vegas - North data center is compliant with several industry and regulatory standards, including the HITRUST CSF and PCI DSS. We are among a select few in the industry that can make this claim and provide a certified, protected environment to support your compliance requirements and security needs.

Quick facts

- 111,240-square-foot data center footprint
- 9 MW critical load UPS capacity; Distributed Redundant 4:3 UPS
- N+1 cooling redundancy
- 100% SLA on power
- 100 Gbps network backbone, scalable to 400 Gbps
- 4-zone security access

Additional features

- Migration and capacity planning
- Meeting room and dedicated work areas for customer use
- Office lease space available
- Remote hands support available
- Business continuity and disaster recovery services, solutions and support available
- Public, private, hybrid and compliant cloud solutions, as well as cloud recovery and dedicated servers, available
- Professional services including migration, security and risk management, assessments and audits, as well as performance and network architecture support, available

Facility specifications

Power & cooling

- Distributed Redundant 4:3 UPS
- 9 MW critical load UPS capacity
- Up to 80+ kW per cabinet
- N + 1 cooling redundancy
- Hot/cold aisle configuration
- 100% power SLA
- 1.3 PUE rating

Compliance

- HITRUST CSF compliant site
- PCI DSS compliant site
- Annual, independent audits for SOC 1 Tier Type II, SOC 2 Type II, SOC 3; NIST 800-53; ITAR: SSAE 18
- HITRUST and PCI certification services available
- Regulatory and standards compliance assessment, analysis, consulting and planning services available

24/7 Security

- Round-the-clock security and technical staff
- Dual-factor authentication access
- Biometric scanners
- 5-zone security access
- Monitored security cameras and intercom system
- Cage security cameras available

Connectivity

- One unified fabric offering on-demand provisioning of connectivity services
- Connections to strategic carrier hotels
- 100Gbps network backbone
- Access to a rich ecosystem of carriers, service providers and cloud providers reachable from any data center
- IP transit service built on a blend of premium Tier I carriers and including basic DDoS scrubbing protection
- Point to point and mesh services available to connect Flexential data centers

[Request a Tour](#)

Flexential solutions portfolio



Colocation



Interconnection



Cloud



Data Protection



Professional Services



Minneapolis – Chaska data center



As a Generation 4 data center, our Minneapolis - Chaska data center in the Minneapolis metropolitan area is purpose-built to accommodate power densities of over 1,500 watts per square foot, with 24-foot ceilings, proprietary and highly efficient cooling units and a pressurized raised floor. The data center spans over 160,000 square feet with ample room for growth, providing you with exceptional cage configuration flexibility.

If you are in the healthcare industry or if you process credit card payments online, we are here to help secure, manage and maintain compliance. The Minneapolis - Chaska data center is certified for compliance with several industry and regulatory standards, including the HITRUST CSF and PCI DSS.

Quick facts

- 160,838-square-foot data center footprint
- 9 MW critical load UPS capacity; Distributed Redundant 4:3 UPS
- N+1 cooling redundancy
- 100% SLA on power, network and bandwidth

Additional features

- Migration and capacity planning
- Meeting room and dedicated work areas for customer use
- Office lease space available
- Remote hands support available
- Business continuity and disaster recovery services, solutions and support available
- Public, private, hybrid and compliant cloud solutions, as well as cloud recovery and dedicated servers, available
- Professional services including migration, security and risk management, assessments and audits, as well as performance and network architecture support, available

Facility specifications

Power & cooling

- Distributed Redundant 4:3 UPS
- 9 MW critical load UPS capacity
- 1500 W/SF power density
- N+1 cooling redundancy
- Hot/cold aisle configuration
- 100% power SLA

Compliance

- HITRUST CSF compliant site
- PCI DSS compliant site
- Annual, independent audits for SOC 1 Tier Type II, SOC 2 Type II, SOC 3; NIST 800-53; ITAR: SSAE 18
- HITRUST and PCI certification services available
- Regulatory and standards compliance assessment, analysis, consulting and planning services available

24/7 Security

- Round-the-clock security and technical staff
- Dual-factor authentication access
- Biometric scanners
- Monitored security cameras and intercom system
- Cage security cameras available

Connectivity

- One unified fabric offering on-demand provisioning of connectivity services
- Connections to strategic carrier hotels
- 100Gbps network backbone
- Access to a rich ecosystem of carriers, service providers and cloud providers reachable from any data center
- IP transit service built on a blend of premium Tier I carriers and including basic DDoS scrubbing protection
- Point to point and mesh services available to connect Flexential data centers

[Request a Tour](#)

Flexential solutions portfolio



Colocation



Interconnection



Cloud



Data Protection



Professional Services



Nashville – Franklin data center



Our 80,000-square-foot Nashville - Franklin data center was purpose-built to deliver maximum performance, reliability and connectivity. The site features 2N UPS power redundancy and N+1 cooling redundancy.

In addition, the Nashville - Franklin data center is connected to our industry-leading 100-gigabit network backbone -- scalable to 400 Gbps -- and features carrier hotel connectivity, Layer 2 access to 80 on-net carriers, proactive Layer 3 and Layer 4 distributed denial of service protection and a 100% network and bandwidth uptime commitment.

Security and compliance support are part of the package. Our physical security features include, among others: 4-zone security access, biometric scanners and monitored security cameras and intercom systems. The site is compliant with several industry and regulatory regulations. We are among a select few in the industry that can provide a certified, protected environment to support compliance with PCI DSS.

Quick facts

- 80,726-square-foot data center footprint
- 3.75 MW critical load UPS capacity; 2N UPS redundancy
- N+1 cooling redundancy
- 100% SLA on power, network and bandwidth
- 100 Gbps network backbone, scalable to 400 Gbps
- 4-zone security access

Additional features

- Migration and capacity planning
- Meeting room and dedicated work areas for customer use
- Office lease space available
- Remote hands support available
- Business continuity and disaster recovery services, solutions and support available
- Public, private, hybrid and compliant cloud solutions, as well as cloud recovery and dedicated servers, available
- Professional services including migration, security and risk management, assessments and audits, as well as performance and network architecture support, available

Facility specifications

Power & cooling

- 2N UPS redundancy
- 3.75 MW critical load UPS capacity
- 150 W/SF power density
- N + 1 cooling redundancy
- Hot/cold aisle configuration
- 100% power SLA

Compliance

- PCI DSS compliant site
- Annual, independent audits for SOC 1 Tier Type II, SOC 2 Type II, SOC 3; NIST 800-53; ITAR: SSAE 18
- HITRUST and PCI certification services available
- Regulatory and standards compliance assessment, analysis, consulting and planning services available

24/7 Security

- Round-the-clock security and technical staff
- Dual-factor authentication access
- Biometric scanners
- 4-zone security access
- Monitored security cameras and intercom system

Connectivity

- One unified fabric offering on-demand provisioning of connectivity services
- Connections to strategic carrier hotels
- 100Gbps network backbone
- Access to a rich ecosystem of carriers, service providers and cloud providers reachable from any data center
- IP transit service built on a blend of premium Tier I carriers and including basic DDoS scrubbing protection
- Point to point and mesh services available to connect Flexential data centers

[Request a Tour](#)

Flexential solutions portfolio



Colocation



Interconnection



Cloud



Data Protection



Professional Services



Philadelphia – Collegeville data center



Our 203,000-square-foot data center located in Collegeville, Pa. is designed to provide the power, cooling, network and security that mission-critical IT environments require.

Backed by a 100% commitment to satisfaction as well as power, bandwidth and network services availability, our Philadelphia - Collegeville data center can accommodate high power densities that hyperconverged infrastructure and other memory-intensive and latency-sensitive applications require. The data center features a 2(N+1) fault-tolerant uninterruptible power supply configuration with 7.2 megawatts of UPS critical load capacity, as well as N+1 redundant, energy-efficient cooling, and connectivity to more than 80 carriers.

Quick facts

- 203,703-square-foot data center footprint
- 7.20 MW critical load UPS capacity; 2(N+1) UPS redundancy
- N+1 cooling redundancy
- 100% SLA on power, network and bandwidth
- 100 Gbps network backbone, scalable to 400 Gbps
- 5 zone security access

Additional features

- Migration and capacity planning
- Meeting room and dedicated work areas for customer use
- Office lease space available
- Remote hands support available
- Business continuity and disaster recovery services, solutions and support available
- Public, private, hybrid and compliant cloud solutions, as well as cloud recovery and dedicated servers, available
- Professional services including migration, security and risk management, assessments and audits, as well as performance and network architecture support, available

Facility specifications

Power & cooling

- 2(N+1) UPS redundancy
- 7.20 MW critical load UPS capacity
- 1,500+ W/SF power density
- N+1 cooling redundancy
- Hot/cold aisle configuration
- 100% power SLA
- 1.7 PUE rating

Compliance

- HITRUST CSF compliant site
- PCI DSS compliant site
- Annual, independent audits for SOC 1 Tier Type II, SOC 2 Type II, SOC 3; NIST 800-53; ITAR: SSAE 18
- HITRUST and PCI certification services available
- Regulatory and standards compliance assessment, analysis, consulting and planning services available

24/7 Security

- Physical environment, power delivery, generator and diesel fuel monitoring
- Round-the-clock security and technical staff
- Dual-factor authentication access
- Biometric scanners
- 4-zone security access
- Monitored security cameras and intercom system
- Cage security cameras available

Connectivity

- One unified fabric offering on-demand provisioning of connectivity services
- Connections to strategic carrier hotels
- 100Gbps network backbone
- Access to a rich ecosystem of carriers, service providers and cloud providers reachable from any data center
- IP transit service built on a blend of premium Tier I carriers and including basic DDoS scrubbing protection
- Point to point and mesh services available to connect Flexential data centers

[Request a Tour](#)

Flexential solutions portfolio



Colocation



Interconnection



Cloud



Data Protection



Professional Services



Portland - Hillsboro 2 data center



Our Generation 4 Portland - Hillsboro 2 data center is purpose-built to accommodate power densities of over 1,500 watts per square foot, with 24-foot ceilings, proprietary and highly efficient cooling units and a pressurized raised floor. It also is among the best connected data centers in the world.

It is the U.S. point of presence for the Bifrost, New Cross Pacific, and Hawaiiki transpacific subsea cables that provide direct, low latency connectivity between the United States and the Asia-Pacific region.

Moreover, our network backbone delivers an industry-leading 100 gigabits per second of connectivity, which is scalable to 400 Gbps, as well as carrier hotel connectivity, Layer 2 access to 80 on-net carriers, proactive Layer 3 and Layer 4 distributed denial of service protection and a 100% network and bandwidth uptime commitment.

The Portland - Hillsboro 2 data center also has a cloud node on-site to support your hybrid IT needs.

This site also is certified according to several industry and regulatory standards, including the HITRUST CSF and PCI DSS.

Quick facts

- 242,683-square-foot data center footprint
- 18 MW critical load UPS capacity; Distributed Redundant 4:3 UPS
- N+1 cooling redundancy
- 100% SLA on power, network and bandwidth
- 100 Gbps network backbone, scalable to 400 Gbps
- 5-zone security access

Additional features

- Cloud node on-site
- Migration and capacity planning
- Meeting room and dedicated work areas for customer use
- Office lease space available
- Remote hands support available
- Business continuity and disaster recovery services, solutions and support available
- Public, private, hybrid and compliant cloud solutions, as well as cloud recovery and dedicated servers, available
- Professional services including migration, security and risk management, assessments and audits, as well as performance and network architecture support, available

Facility specifications

Power & cooling

- Distributed Redundant 4:3 UPS
- 18 MW critical load UPS capacity
- 1,500 W/SF power density
- N+1 cooling redundancy
- Hot/cold aisle configuration
- 100% power SLA
- 1.3 PUE rating

Compliance

- HITRUST CSF compliant site
- PCI DSS compliant site
- Annual, independent audits for SOC 1 Tier Type II, SOC 2 Type II, SOC 3; NIST 800-53; ITAR: SSAE 18
- HITRUST and PCI certification services available
- Regulatory and standards compliance assessment, analysis, consulting and planning services available

24/7 Security

- Physical environment, power delivery, generator and diesel fuel infrastructure monitoring
- Round-the-clock security and technical staff
- Dual-factor authentication access
- Biometric scanners
- 5-zone security access
- Monitored security cameras and intercom system
- Cage security cameras available

Connectivity

- One unified fabric offering on-demand provisioning of connectivity services
- Connections to strategic carrier hotels
- 100Gbps network backbone
- Access to a rich ecosystem of carriers, service providers and cloud providers reachable from any data center
- IP transit service built on a blend of premium Tier I carriers and including basic DDoS scrubbing protection
- Point to point and mesh services available to connect Flexential data centers

[Request a Tour](#)

Flexential solutions portfolio



Colocation



Interconnection



Cloud



Data Protection



Professional Services



Portland – Hillsboro 3 data center



Supplying highly connected data center solutions in the Portland market, Hillsboro 3 provides 358,000 square feet and 36 MW of data center space. It features industry-leading cooling efficiencies and high-density capabilities with direct connection to several subsea cables, including Bifrost, New Cross Pacific, and Hawaiki.

With the addition of Portland – Hillsboro 3 to the Flexential campus, the data center footprint is now nearly 700,000 sq. ft.

Strategically located within Hillsboro's Enterprise Zone region, the Flexential Portland data centers provide customers with significant tax benefits in addition to Oregon's zero percent statewide sales tax.

Portland-Hillsboro 3 is included in the Flexential data center campus cross-connect fiber ring, featuring nine Tier 1 carriers with underground fiber to all major U.S. cities, enabling nominal domestic latency. Flexential has completed a second campus cross-connect fiber ring, which connects 14 existing or planned data centers and provides access to seven transpacific submarine cable systems.

The Flexential Portland-Hillsboro 3 has direct access to the Flexential NAP of the Northwest facility that hosts three high capacity trans-Pacific cables: Bifrost, New Cross Pacific, and Hawaiki which connect Hillsboro and Asia Pacific, including Hawaii, Australia, New Zealand, China, South Korea, Taiwan and Japan. Access to additional trans-Pacific subsea cable destinations are planned for the future.

Quick facts

- 358,000-square-foot data center footprint
- 36 MW critical power capacity
- 20 acres located within the Hillsboro Enterprise Zone
- Highest cooling efficiency design in the region
- High density capabilities
- Commitment to sustainability with a WUE of 0
- Industry leading PUE
- Located on the Flexential data center campus, the most interconnected campus in the NW, with subsea cable landings for direct connection to APAC

Additional features

- Migration and capacity planning
- Meeting room and dedicated work areas for customer use
- Office lease space available
- Remote hands support available
- Business continuity and disaster recovery services, solutions and support available
- Public, private, hybrid and compliant cloud solutions, as well as cloud recovery and dedicated servers, available
- Professional services including migration, security and risk management, assessments and audits, as well as performance and network architecture support, available

Facility specifications

Power & cooling

- Distributed redundant 4:3 UPS system
- Fault tolerant electrical and mechanical systems
- 36 MW critical load UPS capacity
- 1,500 W/SF power density
- N+2 cooling redundancy
- Hot/cold aisle configuration
- 100% power SLA
- Designed for 1.3 PUE

Compliance

- HITRUST CSF compliant site
- PCI DSS compliant site
- Annual, independent audits for SOC 1 Tier Type II, SOC 2 Type II, SOC 3; NIST 800-53; ITAR: SSAE 18
- HITRUST and PCI certification services available
- Regulatory and standards compliance assessment, analysis, consulting and planning services available

24/7 Security

- Physical environment, power delivery, generator and diesel fuel infrastructure monitoring
- Round-the-clock security and technical staff
- Dual-factor authentication access
- Biometric scanners
- 4-zone security access
- Monitored security cameras and intercom system
- Cage security cameras available

Connectivity

- One unified fabric offering on-demand provisioning of connectivity services
- Connections to strategic carrier hotels
- 100Gbps network backbone
- Access to a rich ecosystem of carriers, service providers and cloud providers reachable from any data center
- IP transit service built on a blend of premium Tier I carriers and including basic DDoS scrubbing protection
- Point to point and mesh services available to connect Flexential data centers

[Request a Tour](#)

Flexential solutions portfolio



Colocation



Interconnection



Cloud



Data Protection



Professional Services



Portland - Hillsboro 4 data center



Wholesale data center design

The fourth Flexential Data Center in this market, Hillsboro 4 sits on a newly added campus property and is adjacent to the Flexential Hillsboro 3 facility.

Design specifications for a minimum of 1 MW and up to 9 MW:

- Caged POD Design starting at 1 MW with 4 PODS and increments of 500 kW
- Cage sizes start at approximately 2,400 square feet
- Each POD consists of 24 cabinets with Hot Aisle Containment for approx. 250 kW per POD
- Approx. 400 watts per square foot
- Power delivered overhead

With the initial build, Hillsboro 4 adds 138,000 sq. ft. and 18 MW to the Flexential regional footprint. Additional capacity is planned to total 54 MW on this campus to meet and exceed increasing customer demand on the FlexAnywhere® Platform.

Strategically located within Hillsboro's Enterprise Zone region, Flexential Portland data centers provide customers with significant tax benefits in addition to Oregon's zero percent sales tax statewide.

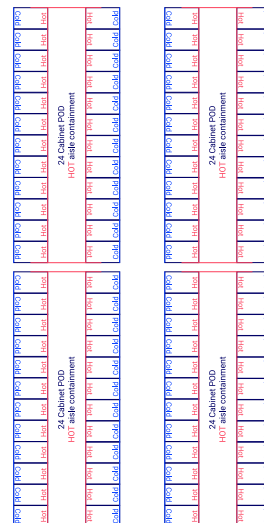
The new development will also provide additional ecosystem partners with room for future growth in the Pacific Northwest, delivering access to multiple subsea cables in the Flexential highly connected NAP of the Northwest.

Quick facts

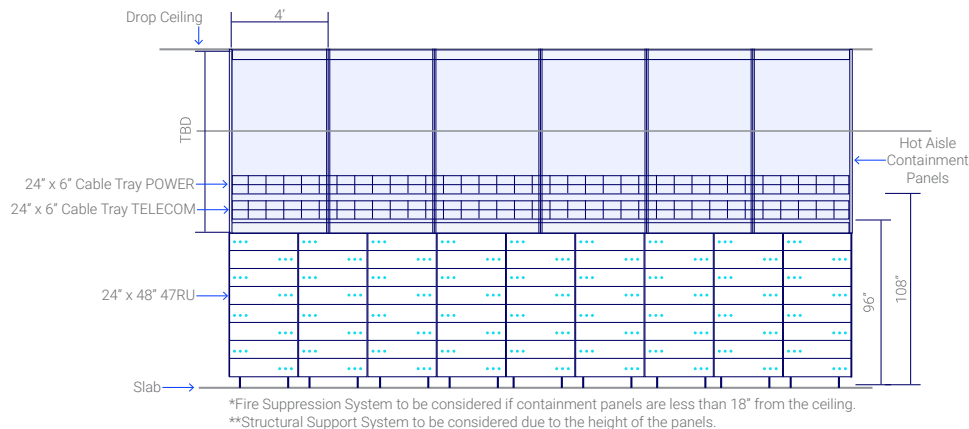
- 18MW of critical power
- 158,000 sq. ft. data center footprint
- N+2 cooling redundancy
- Design PUE of 1.4
- Zero water use (WUE = 0)

Additional features

- Directly connected to the Cloud node at Hillsboro 2
- Migration and capacity planning
- Meeting room and dedicated work areas for customer use
- Office lease space available
- Remote hands support available
- Business continuity and disaster recovery services, solutions and support available
- Public, private, hybrid and compliant cloud solutions, as well as cloud recovery and dedicated servers, available
- Professional services including migration, security and risk management, assessments and audits, as well as performance and network architecture support, available



Facility specifications



Power & cooling

- Distributed redundant UPS systems
- 18 MW critical load UPS capacity
- Support for high-density deployments
- N+2 cooling redundancy
- Hot aisle containment
- 100% power SLA
- Design PUE of 1.4
- Zero water use (WUE = 0)

Compliance

- HITRUST CSF compliant site
- PCI DSS compliant site
- Annual, independent audits for SOC 1 Tier Type II, SOC 2 Type II, SOC 3; NIST 800-53; ITAR: SSAE 18
- HITRUST and PCI certification services available
- Regulatory and standards compliance assessment, analysis, consulting and planning services available

24/7 Security

- Physical environment, power delivery, generator and diesel fuel infrastructure monitoring
- Round-the-clock security and technical staff
- Dual-factor authentication access
- 4-zone security access
- Monitored security cameras
- Cage security cameras available

Connectivity

- One unified fabric offering on-demand provisioning of connectivity services
- Connections to strategic carrier hotels
- 100Gbps network backbone
- Access to a rich ecosystem of carriers, service providers and cloud providers reachable from any data center
- IP transit service built on a blend of premium Tier I carriers and including basic DDoS scrubbing protection
- Point to point and mesh services available to connect Flexential data centers

[Request a Tour](#)

Flexential solutions portfolio



Colocation



Interconnection



Cloud



Data Protection



Professional Services



Portland - Hillsboro 5 data center



Wholesale high-density design

The latest innovation in AI/ML applications requires cutting-edge data center infrastructure in order to meet business demands. Flexential Hillsboro 5, the latest high-density data center in the market, is built to support today's requirements, providing up to 80+ kW per cabinet and liquid-ready infrastructure.

Hillsboro 5 features 358,000 across two floors with 36 MW. Located on the Flexential data center campus, the most interconnected campus in the Northwest, with subsea cable landings for direct connection to APAC.

Flexential has pioneered the latest innovation to address customers key data center challenges

Flexential ingenuity has created this next generation of data center design to accommodate technology of today and future innovation. Future-proof your infrastructure requirements with scale to grow all facets of your design: network, power, square feet, or cloud/managed services.

Hillsboro 5 is liquid cooling ready containing a chilled water loop that can be tapped for your liquid cooling solution. Built to provide security and privacy with individual data halls that you can call home with office leasing opportunities and other employee features.

Quick facts

- 358,000 square-foot facility
- 36 MW distributed, (4:3) UPS redundancy
- N+1 cooling redundancy
- 100% SLA on power, network and bandwidth
- Innovative, sustainable design consumes zero water and is highly efficient

Additional features

- Standardized and modular design
- Infrastructure deployments in independent sets of 4.5 MW blocks
- Efficient and sustainable: 1.4 PUE, 0 WUE
- Optimal redundancy 5:4 UPS distributed, redundant
- Up to 80+ kW per cabinet to support AI workloads
- A chilled waterloop can be tapped for liquid cooling solutions

Facility specifications

Power & cooling

- UPS redundancy: 5:4 distributed redundant
- 36 MW critical load UPS capacity
- Supports up to 80 + kW per cabinet
- Liquid cooling ready, high density capable
- N+2 cooling redundancy
- Hot/cold aisle configuration
- 100% power SLA
- Target PUE 1.4

Compliance

- HITRUST CSF compliant site
- PCI DSS compliant site
- Annual, independent audits for SOC 1 Tier Type II, SOC 2 Type II, SOC 3; NIST 800-53; ITAR: SSAE 18
- HITRUST and PCI certification services available
- Regulatory and standards compliance assessment, analysis, consulting and planning services available

24/7 Security

- Physical environment, power delivery generator, and diesel fuel infrastructure monitoring
- Round-the-clock security and technical staff
- Dual-factor authentication access
- Biometric scanners
- 4-zone security access
- Monitored security cameras and intercom system
- Cage security cameras available

Connectivity

- One unified fabric offering on-demand provisioning of connectivity services
- Connections to strategic carrier hotels
- 100Gbps network backbone
- Access to a rich ecosystem of carriers, service providers and cloud providers reachable from any data center
- IP transit service built on a blend of premium Tier I carriers and including basic DDoS scrubbing protection
- Point to point and mesh services available to connect Flexential data centers

[Request a Tour](#)

Flexential solutions portfolio



Colocation



Interconnection



Cloud



Data Protection



Professional Services



Portland – Hillsboro 6 data center



Flexential has pioneered the latest innovation to address customers key data center challenges

Flexential ingenuity has created this next generation of data center design to accommodate technology of today and future innovation. Future-proof your infrastructure requirements with scale to grow all facets of your design: network, power, square feet, or cloud/managed services. Hillsboro 6 is liquid cooling ready, containing a chilled water loop that can be tapped for your liquid cooling solution. Built to provide security and privacy with individual data halls that you can call home with office leasing opportunities and other employee features.

The data center infrastructure is powered by Portland General Electric (PGE)'s Sunset Reliability Center and benefits from redundant power grid access and priority fuel delivery under the utility's Dispatchable Standby Generation program. For Flexential, Oregon is also a gold-level partner in PGE's Clean Wind program, which guarantees access to a reliable renewable energy source.

Hillsboro and the surrounding "Silicon Forest" offer a mix of infrastructure and economic advantages for data center operators, including a well-established ecosystem of cloud and AI providers and meaningful cost savings driven by Oregon's favorable tax environment. Supported by high-capacity fiber, clean energy options, and enterprise zone incentives, Hillsboro has emerged as one of the most attractive tech and data center growth markets in the U.S.

Quick facts

- 350,000 square-foot facility
- 27 MW distributed
- N+2 cooling redundancy
- 100% SLA on power, network and bandwidth
- Innovative, sustainable design consumes zero water and is highly efficient

Additional features

- Standardized and modular design
- Infrastructure deployments in independent sets of 4.5 MW blocks
- Efficient and sustainable: 1.4 PUE, 0 WUE
- Optimal redundancy 4:3 UPS distributed, redundant
- Up to 150+ kW per rack
- Chilled waterloop can be tapped for liquid cooling solutions

Facility specifications

Power & cooling

- UPS redundancy:
 - 4:3 distributed redundant
- 27 MW critical load UPS capacity
- Supports up to 150+ kW per cabinet
- Liquid cooling ready, high density capable
- N+2 cooling redundancy
- Hot/cold aisle configuration
- 100% power SLA
- Target PUE 1.4

Compliance

- PCI, DDS, and HITRUST CSF compliant
- Annual, independent audits for EU-US Privacy Shield framework; SOC 1 Type II, SOC 2 Type II, SOC 3; HIPAA; ISO 27001; and SSAE 18
- Regulatory and standards compliance assessment, analysis, consulting, and planning services available 24/7

24/7 Security

- 5-zone security access
- Physical environment, power delivery generator, and diesel fuel infrastructure monitoring
- Round-the-clock security and technical staff
- Dual-factor authentication access
- Biometric scanners
- Monitored security cameras and intercom system
- Cage security cameras available

Connectivity

- One unified fabric offering on-demand provisioning of connectivity services
- Connections to strategic carrier hotels
- 100Gbps network backbone
- Access to a rich ecosystem of carriers, service providers and cloud providers reachable from any data center
- IP transit service built on a blend of premium Tier I carriers and including basic DDoS scrubbing protection
- Point to point and mesh services available to connect Flexential data centers

[Request a Tour](#)

Flexential solutions portfolio



Colocation



Interconnection



Cloud



Data Protection



Professional Services