



Data Center Information Management (DCIM)

Actively monitor all of your data center infrastructure in real time to increase efficiency and manage costs

Utilize the visual colocation interface and redesigned space details page on the Flexential Experience Platform™ (FXP™) for your organization's colocation monitoring. You can easily view your physical footprint and power usage across your assets with Flexential's DCIM functionality.

It is essential for business IT systems to work flawlessly, however, it is not easy for IT teams to continually monitor, manage and maintain a distributed data center environment.

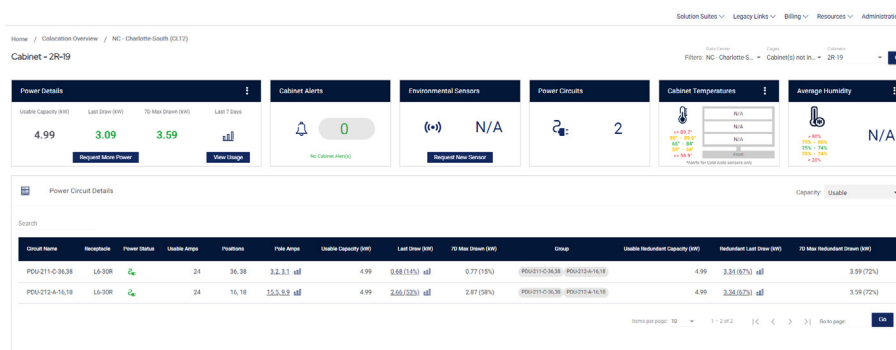
The colocation dashboard page provides you a quick view into cabinet-specific details, including power usage, number of power circuits, humidity, temperature and more.

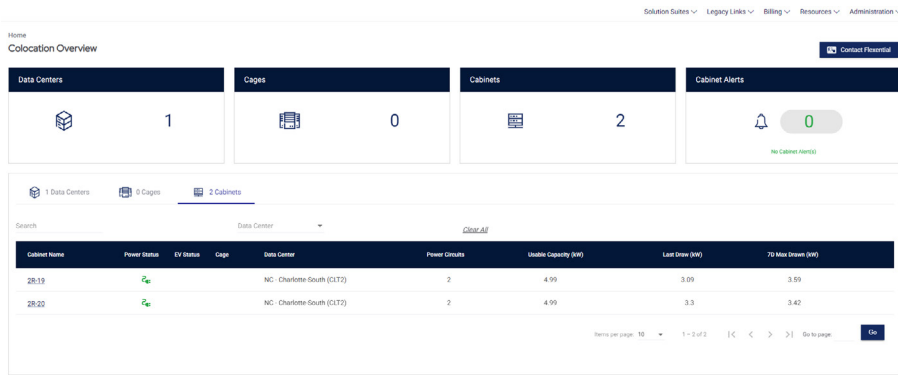
Flexential Founded
1999

Benefits:

- Receive proactive alerts on critical components
- Access support 24/7
- Control users' access to the environment
- Manage invoices
- Order additional services as needed in real time

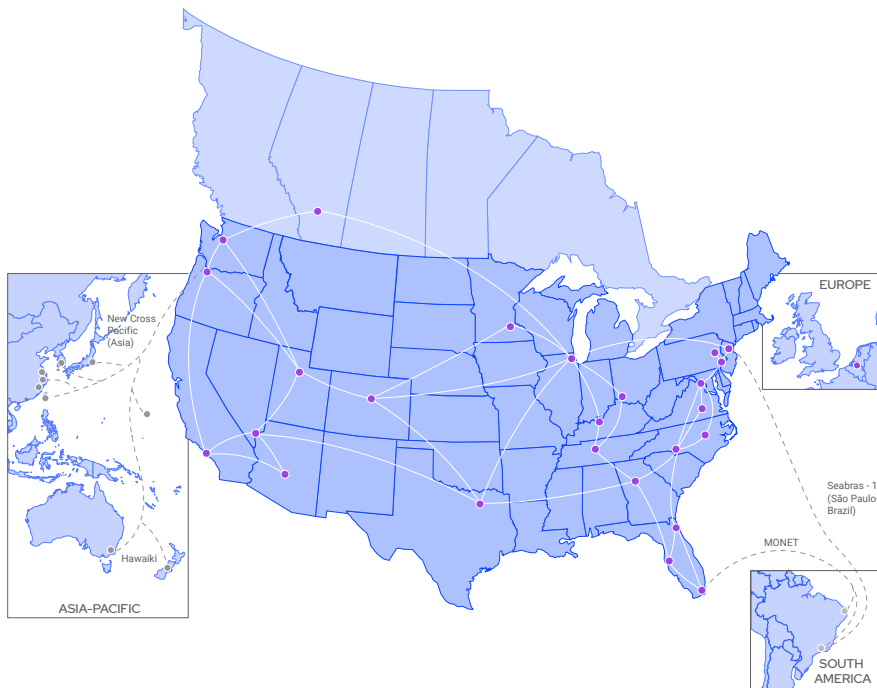
Data Center Environment Dashboard





Data Center Information Management (DCIM) colocation and interconnect functionality and value is just part of the platform. FXP™ provides on-demand visibility of your entire Flexential environment. You can visualize and manage in real time the performance of your data centers and cloud deployments including colocation sites, Flexential cloud, DRaaS and BaaS environments.

Flexential's Colocation Map



● Colocation | Cloud Data Centers | DRaaS Data Centers | Network PoPs | Cloud On-Ramps | Cloud Fabric

— Network Backbone