



Wholesale Data Center Tour Guide

Empowering
Your IT Journey



Contents

Corporate Overview	01	Wholesale Tour Guides	
		Atlanta - Alpharetta	07
FlexAnywhere™	03	Dallas - Plano	09
		Denver - Englewood	11
		Las Vegas - North	13
		Minneapolis - Chaska	15
		Nashville - Franklin	17
		Philadelphia - Collegeville	19
		Portland - Hillsboro 2	21
		Portland - Hillsboro 3	23

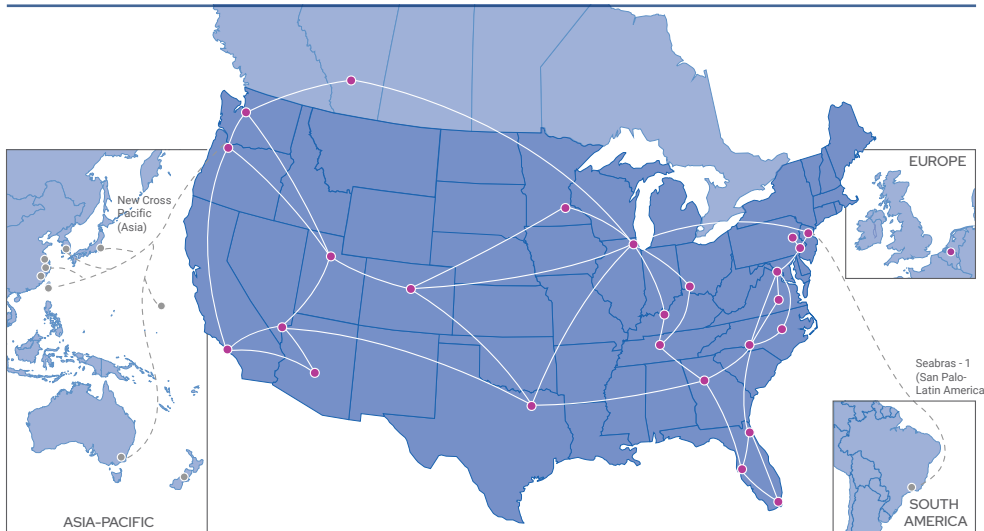
Flexible Essential



Solve complex infrastructure requirements with colocation and cloud solutions tailored to meet your evolving needs.

The intricacy and cost associated with integrating, managing and protecting legacy applications, on-prem and cloud-based environments can be overwhelming. Flexential's consultative approach goes beyond four walls to address your specific demands by tailoring our comprehensive colocation, cloud and data protection portfolio to deliver optimal, long-term performance for your critical applications.

Highly Connected, National Platform



- Colocation | Cloud Data Centers | DRaaS Data Centers | Network PoPs | Cloud On Ramps
- Network Backbone - - - Subsea Cables

For an interactive map of our data centers, cloud regions, DRaaS regions, PoPs and cloud on ramps go to flexential.com

ESTABLISHED: **1999**

Broad Reach & Capabilities

100 Gbps
Network Backbone

3+ Million
Sq. ft Footprint

175 MW
Critical Load
UPS Capacity

200+
Carriers

20
Data Center Markets

40
Data Centers

25
National Peering
Points

Industry & Regulatory Compliance Expertise





Why Flexential?

With 40 data centers across 20 markets, Flexential's consultative approach to solving the toughest IT challenges reaches beyond four walls with a highly connected, national platform of colocation and cloud solutions.

End-to-End Data Center Solutions Portfolio



COLOCATION

Benefit from secure, highly efficient data centers offering high-density power capabilities and geographic proximity for the utmost control of distributed architectures.



CLOUD

Solve complex hybrid IT challenges and support long-term business growth by implementing private, public and hybrid cloud solutions.



CONNECTIVITY

Access hundreds of carriers, hyperscale cloud providers and hybrid IT networks as well as the 100 Gbps FlexAnywhere™ network backbone to enable your interconnection needs.



DISASTER RECOVERY

Protect your data, applications and infrastructure from disruptions using disaster recovery solutions as unique as your business requirements.



MANAGED SERVICES

Outsource critical aspects of your infrastructure from applications to networks and security so your IT staff has time to focus on core business initiatives.



PROFESSIONAL SERVICES

Accelerate your IT journey through consultative, end-to-end engagements that address the most complex infrastructure, security and compliance challenges.

You're in Good Company

FRONTIER

 **Centura Health®**

AutoNation
Watch Customer Story

HITACHI
Inspire the Next

tyco

 **noodles**
A COMPANY

 **McAfee**

COX.

FLEX ANYWHERE™

Driving the Connected World

“Working with a high-quality partner enhances the integrity of our offerings and enables us to better deliver affordable and fast connections to our customers, whether they are on the ground, in the air or at sea.”

Jim Elliot
VICE PRESIDENT, TECHNICAL OPERATIONS
Viasat



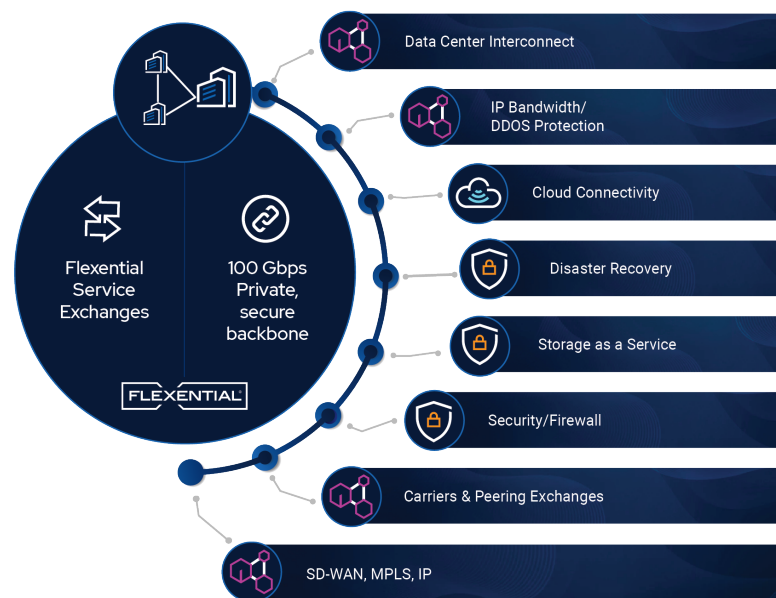
FLEX ANYWHERE™

FlexAnywhere is a reliable, easy-to-use and flexible infrastructure service offering from Flexential.

No matter your infrastructure need, our software-defined infrastructure delivers elastic access to services quickly and easily. This infrastructure enables you to transport rich media and mission-critical data seamlessly between infrastructure/applications and customers/users.

Flexential provides a private, secure and fully managed network to connect to hyperscale cloud providers, back-office platforms, our colocation facilities, carrier hotels or to the edge of the internet. With FlexAnywhere, you can centralize all of your connectivity needs with one provider and on one bill.

FlexAnywhere isn't just a network solution. It's the comprehensive platform that offers continuous flexibility to enable you to take advantage of leading-edge IT infrastructure.



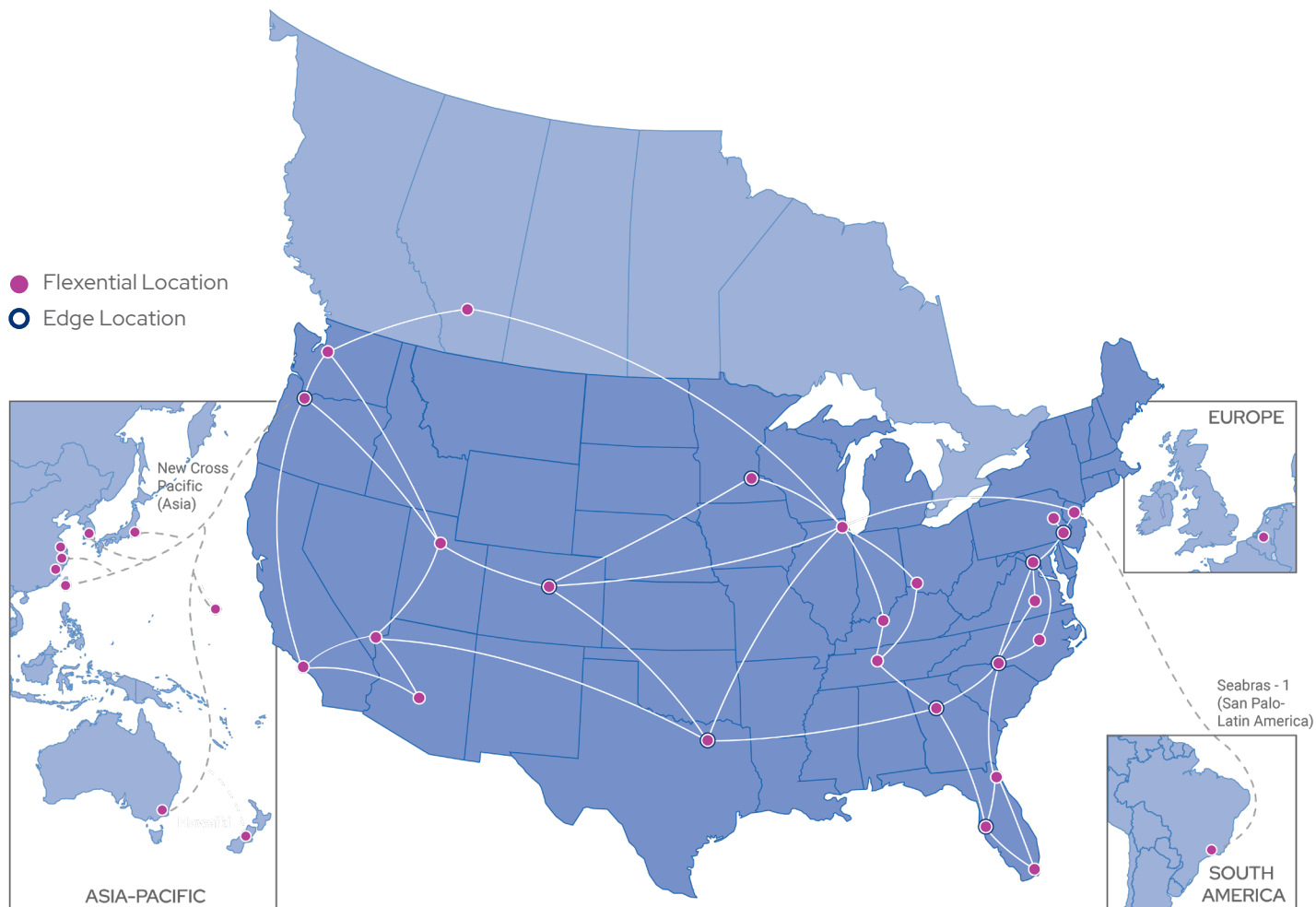
CUTTING-EDGE TECHNOLOGY

FlexAnywhere isn't just another data center solution. The features that set us apart include:

- Software-defined hybrid IT service exchanges that deliver virtual access to connectivity services, making it easy to scale and manage network capabilities
- Connectivity-rich data centers across the U.S. and into Canada that not only enable you to cache popular content and web-application data close to end users but also allow for single-hop connectivity from one data center to another
- Data center interconnect across a 100 Gbps network backbone – scalable to 400 Gbps – spanning 12,000 miles across the U.S. and into Canada
- Private, hybrid and compliant cloud, security and storage services delivered through cloud nodes located in key markets across the U.S. and Europe
- Access to public cloud providers through common on-ramps
- Managed IP bandwidth services, with proactive and automated DDoS protection
- Disaster recovery and managed backup services
- Object storage services for fast, flexible access to your data objects on demand
- Partnerships with more than 250 network, data center, managed service and cloud providers including service providers such as Megaport, IX Reach and PacketFabric and hyperscale providers like Amazon Web Services, Microsoft Azure, Oracle and Google Cloud
- Last-mile connectivity through SD-WAN, MPLS and VPN or private carriers

FlexAnywhere™

ACCESS POINTS



For an interactive map of our data centers, cloud regions, DRaaS regions, POPs and cloud on ramps go to flexential.com

One Hop to Anywhere

The centerpiece of the Flexential network fabric is our high-speed, private, secure network backbone. Our backbone is built on top of lit fiber, over which we operate a Layer 2 virtual local area network. In simple terms, this means that once your data is on our network, it's only one hop away from its destination. Your data bypasses the internet and doesn't have to transit over multiple protocol stacks, be carried by multiple carriers' networks or compete with hordes of social media, content and malicious internet traffic. One-hop connectivity anywhere is fast, simple and secure.

Position Workloads and Data Where They're Needed

The growth of enterprise network-based applications, the Internet of Things and Big Data is driving the next technological evolution. As the amount of data generated through these technologies increases exponentially, your connectivity and infrastructure needs will continue to change. FlexAnywhere provides the flexibility to dynamically adjust your IT infrastructure by delivering the tools to move data and compute to the edge, easily integrate new technologies and elastically adjust capacity.

High-speed, predictable throughput means:

Faster application or payment processing

Better streaming

Faster web download speeds

Faster IoT processing

Faster data transfer across the entire network



Flexential is leading the way with rich, secure and broad connectivity to enable your success.

That's why you need FlexAnywhere.



Atlanta – Alpharetta Data Center

Flexential provides exceptional colocation, connectivity and compliance IT solutions in the heart of Alpharetta's tech corridor, with a data center complex featuring 2N power redundancy and N+1 cooling redundancy.

We offer premium connectivity, including an industry-leading 100 gigabit network backbone - scalable to 400 Gbps, carrier hotel connectivity, Layer 2 access to 80 on-net carriers, proactive Layer 3 and Layer 4 distributed denial of service protection and a 100% network and bandwidth uptime commitment.

Security and compliance support are part of the package. Our physical security features include, among others: 4-zone security access, biometric scanners and monitored security cameras and intercom systems. The site is compliant with several industry and regulatory standards. We are among a select few in the industry that can provide a certified, protected environment to support compliance with PCI DSS.

Quick Facts

- 142,475-square-foot data center footprint
- 6 MW critical load UPS capacity; 2N UPS redundancy
- N+1 cooling redundancy
- 100% SLA on power, network and bandwidth
- 100 Gbps network backbone, scalable to 400 Gbps
- 4-zone security access

Additional Features

- Migration and capacity planning
- Meeting room and dedicated work areas for customer use
- Office lease space available
- Remote hands support available
- Business continuity and disaster recovery services, solutions and support available
- Public, private, hybrid and compliant cloud solutions, plus cloud recovery and dedicated servers, available
- Professional services including migration, security and risk management, assessments and audits, as and performance and network architecture support, available

Facility specifications

Power & Cooling

- 2N UPS redundancy
- 6 MW critical load UPS capacity
- 150 W/SF power density
- N+1 cooling redundancy
- Hot/cold aisle configuration
- 100% power SLA
- 1.6 PUE rating

Compliance

- PCI DSS compliant site
- Annual, independent audits according to: EU-US Privacy Shield framework; SOC 1 Type II, SOC 2 Type II, SOC 3; HIPAA; ISO 27001; SSAE 18
- HITRUST and PCI certification services available
- Regulatory and standards compliance assessment, analysis, consulting and planning services available

24/7 Security

- Round-the-clock security and technical staff
- Dual-factor authentication access
- Biometric scanners
- 4-zone security access
- Monitored security cameras and intercom system
- Cage security cameras available

Connectivity

- 100 Gbps network backbone, scalable to 400 Gbps
- 3 Tb total network capacity
- Layer 2 access to 80 on-net carriers
- Carrier-neutral blended, and proactively managed and monitored, IP bandwidth
- Redundant, automatically rerouted connections ranging from 10 Mbps to 10 Gbps
- Proactive Layer 3 and Layer 4 DDoS protection
- 100% network and bandwidth uptime commitment

Flexential Solutions Portfolio



Colocation



Connectivity



Cloud



Disaster Recovery



Managed Services



Professional Services



Dallas - Plano Data Center

Our Generation 4 Dallas - Plano data center is purpose-built to accommodate power densities of over 1,500 watts per square foot, with 24-foot ceilings, proprietary and highly efficient cooling units and a pressurized raised floor. With a data center footprint of more than 260,000 square feet, we offer plenty of room to grow with you.

Our Dallas - Plano data center also offers premium connectivity, including an industry-leading 100 gigabit network backbone -- scalable to 400 Gbps, carrier hotel connectivity, Layer 2 access to 80 on-net carriers, proactive Layer 3 and Layer 4 distributed denial of service protection and a 100% network and bandwidth uptime commitment.

This site also is certified for compliance with several industry and regulatory standards, including the HITRUST CSF and PCI DSS. We are among a select few in the industry that can make this claim and provide a certified, protected environment to support your compliance requirements and security needs.

Quick Facts

- 261,425-square-foot data center footprint
- 18 MW critical load UPS capacity; Distributed Redundant 4:3 UPS
- N+1 cooling redundancy
- 100% SLA on power
- 100 Gbps network backbone, scalable to 400 Gbps
- 6-zone security access

Additional Features

- Migration and capacity planning
- Meeting room and dedicated work areas for customer use
- Office lease space available
- Remote hands support available
- Business continuity and disaster recovery services, solutions and support available
- Public, private, hybrid and compliant cloud solutions, as well as cloud recovery and dedicated servers, available
- Professional services including migration, security and risk management, assessments and audits, as well as performance and network architecture support, available

Facility specifications

Power & Cooling

- Distributed Redundant 4:3 UPS
- 18 MW critical load UPS capacity
- 1500 W/SF power density
- N + 1 cooling redundancy
- Hot/cold aisle configuration
- 100% power SLA
- 1.3 PUE rating

Compliance

- HITRUST CSF compliant site
- PCI DSS compliant site
- Annual, independent audits according to: EU-US Privacy Shield framework; SSAE 16; SOC 1 Type II, SOC 2 Type II, SOC 3; NIST 800-53; ITAR; SSAE 18
- HITRUST and PCI certification services available
- Regulatory and standards compliance assessment, analysis, consulting and planning services available

24/7 Security

- Physical environment, power delivery, generator and diesel fuel infrastructure monitoring
- Round-the-clock security and technical staff
- Dual-factor authentication access
- Biometric scanners
- 6-zone security access
- Monitored security cameras and intercom system
- Cage security cameras available

Connectivity

- Carrier hotel connectivity
- 100 Gbps network backbone, scalable to 400 Gbps
- 3 Tb total network capacity
- Carrier-neutral blended, and proactively managed and monitored, IP bandwidth
- Redundant, automatically rerouted connections ranging from 10 Mbps to 10 Gbps
- Proactive Layer 3 and Layer 4 DDoS protection
- 100% network and bandwidth uptime commitment

Flexential Solutions Portfolio



Colocation



Connectivity



Cloud



Disaster Recovery



Managed Services



Professional Services



Denver - Englewood Data Center

With a data center footprint approaching 250,000 square feet, the Denver - Englewood data center, located in the Denver metropolitan area, is one of the largest single-floor data halls in the world. It has module-redundant UPS power equipment and multiple redundant fiber-optic telecommunication networks. This means your mission-critical data is always available. As a Generation 4 data center, this facility is purpose-built to accommodate power densities of over 1,500 watts per square foot, with 24-foot ceilings, proprietary and highly efficient cooling units and a pressurized raised floor.

With a cloud node on-site and a network backbone of 100 gigabits per second, scalable to 400 Gbps, we are exceptionally equipped to support your IT transformation journey and deliver low latency and high capacity for your mission-critical applications.

Rely on us for Layer 2 access to 80 on-net carriers, proactive Layer 3 and Layer 4 distributed denial of service protection and a 100% network and bandwidth uptime commitment.

If you are in the healthcare industry or if you process credit card payments online, we are here to help secure, manage and maintain compliance. The Denver - Englewood data center is certified for compliance with several industry and regulatory standards, including the HITRUST CSF and PCI DSS.

Quick Facts

- 240,549-square-foot data center footprint
- 18 MW critical load UPS capacity; Distributed Redundant 4:3 UPS
- N+2 cooling redundancy
- 100% SLA on power, network and bandwidth
- 4-zone security access

Additional Features

- Cloud node on-site
- Migration and capacity planning
- Meeting room and dedicated work areas for customer use
- Office lease space available
- Remote hands support available
- Business continuity and disaster recovery services, solutions and support available
- Public, private, hybrid and compliant cloud solutions, as well as cloud recovery and dedicated servers, available
- Professional services including migration, security and risk management, assessments and audits, as well as performance and network architecture support, available

Facility specifications

Power & Cooling

- Distributed Redundant 4:3 UPS
- 18 MW critical load UPS capacity
- 1500 W/SF power density
- N + 2 cooling redundancy
- Hot/cold aisle configuration
- 100% power SLA
- 1.3 PUE rating

Compliance

- HITRUST CSF compliant site
- PCI DSS compliant site
- Annual, independent audits according to: EU-US Privacy Shield framework; SOC 1 Type II, SOC 2 Type II, SOC 3; NIST 800-53; ITAR; SSAE 18
- HITRUST and PCI certification services available
- Regulatory and standards compliance assessment, analysis, consulting and planning services available

24/7 Security

- Physical environment, power delivery, generator and diesel fuel infrastructure monitoring
- Round-the-clock security and technical staff
- Dual-factor authentication access
- Biometric scanners
- 4-zone security access
- Monitored security cameras and intercom system
- Cage cameras available

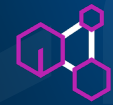
Connectivity

- 100 Gbps network backbone, scalable to 400 Gbps
- 3 Tb total network capacity
- Layer 2 access to 80 on-net carriers
- Carrier-neutral blended, and proactively managed and monitored, IP bandwidth
- Redundant, automatically rerouted connections ranging from 10 Mbps to 10 Gbps
- Proactive Layer 3 and Layer 4 DDoS protection
- 100% network and bandwidth uptime

Flexential Solutions Portfolio



Colocation



Connectivity



Cloud



Disaster Recovery



Managed Services



Professional Services



Las Vegas – North Data Center

With a data center footprint exceeding 111,000 square feet, our Las Vegas - North data center features N+1 power and cooling redundancy as well as premium connectivity. Flexential is one of few data center providers with a 100 gigabit network backbone – scalable to 400 Gbps. We also offer Layer 2 access to 80 on-net carriers, proactive Layer 3 and Layer 4 distributed denial of service protection and a 100% network and bandwidth uptime commitment.

Security and compliance support are part of the package. Our Las Vegas - North data center is compliant with several industry and regulatory standards, including the HITRUST CSF and PCI DSS. We are among a select few in the industry that can make this claim and provide a certified, protected environment to support your compliance requirements and security needs.

Quick Facts

- 111,240-square-foot data center footprint
- 9 MW critical load UPS capacity; Distributed Redundant 4:3 UPS
- N+1 cooling redundancy
- 100% SLA on power
- 100 Gbps network backbone, scalable to 400 Gbps
- 4-zone security access

Additional Features

- Migration and capacity planning
- Meeting room and dedicated work areas for customer use
- Office lease space available
- Remote hands support available
- Business continuity and disaster recovery services, solutions and support available
- Public, private, hybrid and compliant cloud solutions, as well as cloud recovery and dedicated servers, available
- Professional services including migration, security and risk management, assessments and audits, as well as performance and network architecture support, available

Facility specifications

Power & Cooling

- Distributed Redundant 4:3 UPS
- 9 MW critical load UPS capacity
- 1500 W/SF power density
- N + 1 cooling redundancy
- Hot/cold aisle configuration
- 100% power SLA
- 1.3 PUE rating

Compliance

- HITRUST CSF compliant site
- PCI DSS compliant site
- Annual, independent audits according to: EU-US Privacy Shield framework; SOC 1 Type II, SOC 2 Type II, SOC 3; NIST 800-53; ITAR; SSAE 18
- HITRUST and PCI certification services available
- Regulatory and standards compliance assessment, analysis, consulting and planning services available

24/7 Security

- Round-the-clock security and technical staff
- Dual-factor authentication access
- Biometric scanners
- 5-zone security access
- Monitored security cameras and intercom system
- Cage cameras available

Connectivity

- 100 Gbps network backbone, scalable to 400 Gbps
- 3 Tb total network capacity
- Layer 2 access to 80 on-net carriers
- Carrier-neutral blended, and proactively managed and monitored, IP bandwidth
- Redundant, automatically rerouted connections ranging from 10 Mbps to 10 Gbps
- Proactive Layer 3 and Layer 4 DDoS protection
- 100% network & bandwidth uptime commitment

Flexential Solutions Portfolio



Colocation



Connectivity



Cloud



Disaster Recovery



Managed Services



Professional Services



Minneapolis - Chaska Data Center

As a Generation 4 data center, our Minneapolis - Chaska data center in the Minneapolis metropolitan area is purpose-built to accommodate power densities of over 1,500 watts per square foot, with 24-foot ceilings, proprietary and highly efficient cooling units and a pressurized raised floor. The data center spans over 160,000 square feet with ample room for growth, providing you with exceptional cage configuration flexibility.

If you are in the healthcare industry or if you process credit card payments online, we are here to help secure, manage and maintain compliance. The Minneapolis - Chaska data center is certified for compliance with several industry and regulatory standards, including the HITRUST CSF and PCI DSS.

Quick Facts

- 160,838-square-foot data center footprint
- 9 MW critical load UPS capacity; Distributed Redundant 4:3 UPS
- N+1 cooling redundancy
- 100% SLA on power, network and bandwidth

Additional Features

- Migration and capacity planning
- Meeting room and dedicated work areas for customer use
- Office lease space available
- Remote hands support available
- Business continuity and disaster recovery services, solutions and support available
- Public, private, hybrid and compliant cloud solutions, as well as cloud recovery and dedicated servers, available
- Professional services including migration, security and risk management, assessments and audits, as well as performance and network architecture support, available

Facility specifications

Power & Cooling

- Distributed Redundant 4:3 UPS
- 9 MW critical load UPS capacity
- 1500 W/SF power density
- N+1 cooling redundancy
- Hot/cold aisle configuration
- 100% power SLA
- 1.4 PUE rating

Compliance

- HITRUST CSF compliant site
- PCI DSS compliant site
- Annual, independent audits according to: EU-US Privacy Shield framework; SOC 1 Type II, SOC 2 Type II, SOC 3; NIST 800-53; ITAR; SSAE 18
- HITRUST and PCI certification services available
- Regulatory and standards compliance assessment, analysis, consulting and planning services available

24/7 Security

- Round-the-clock security and technical staff
- Dual-factor authentication access
- Biometric scanners
- Monitored security cameras and intercom system
- Cage cameras available

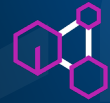
Connectivity

- 3 Tb total network capacity
- Carrier-neutral blended, and proactively managed and monitored, IP bandwidth
- Redundant, automatically rerouted connections ranging from 10 Mbps to 10 Gbps
- Proactive Layer 3 and Layer 4 DDoS protection

Flexential Solutions Portfolio



Colocation



Connectivity



Cloud



Disaster Recovery



Managed Services



Professional Services



Nashville - Franklin Data Center

Our 80,000-square-foot Nashville - Franklin data center was purpose-built to deliver maximum performance, reliability and connectivity. The site features 2N UPS power redundancy and N+1 cooling redundancy.

In addition, the Nashville - Franklin data center is connected to our industry-leading 100-gigabit network backbone -- scalable to 400 Gbps -- and features carrier hotel connectivity, Layer 2 access to 80 on-net carriers, proactive Layer 3 and Layer 4 distributed denial of service protection and a 100% network and bandwidth uptime commitment.

Security and compliance support are part of the package. Our physical security features include, among others: 4-zone security access, biometric scanners and monitored security cameras and intercom systems. The site is compliant with several industry and regulatory regulations. We are among a select few in the industry that can provide a certified, protected environment to support compliance with PCI DSS.

Quick Facts

- 80,726-square-foot data center footprint
- 3.75 MW critical load UPS capacity; 2N UPS redundancy
- N+1 cooling redundancy
- 100% SLA on power, network and bandwidth
- 100 Gbps network backbone, scalable to 400 Gbps
- 4-zone security access

Additional Features

- Migration and capacity planning
- Meeting room and dedicated work areas for customer use
- Office lease space available
- Remote hands support available
- Business continuity and disaster recovery services, solutions and support available
- Public, private, hybrid and compliant cloud solutions, as well as cloud recovery and dedicated servers, available
- Professional services including migration, security and risk management, assessments and audits, as well as performance and network architecture support, available

Facility specifications

Power & Cooling

- 2N UPS redundancy
- 3.75 MW critical load UPS capacity
- 150 W/SF power density
- N + 1 cooling redundancy
- Hot/cold aisle configuration
- 100% power SLA
- 1.75 PUE rating

Compliance

- PCI DSS compliant site
- Annual, independent audits according to: EU-US Privacy Shield framework; SOC 1 Type II, SOC 2 Type II, SOC 3; HIPAA; ISO 27001; SSAE 18
- HITRUST and PCI certification services available
- Regulatory and standards compliance assessment, analysis, consulting and planning services available

24/7 Security

- Round-the-clock security and technical staff
- Dual-factor authentication access
- Biometric scanners
- 4-zone security access
- Monitored security cameras and intercom system

Connectivity

- Carrier hotel connectivity
- 100 Gbps network backbone; scalable to 400 Gbps
- 3 Tb total network capacity
- Carrier-neutral blended, and proactively managed and monitored, IP bandwidth
- Redundant, automatically rerouted connections ranging from 10 Mbps to 10 Gbps
- Proactive Layer 3 and Layer 4 DDoS protection
- 100% network and bandwidth uptime commitment

Flexential Solutions Portfolio



Colocation



Connectivity



Cloud



Disaster Recovery



Managed Services



Professional Services



Philadelphia – Collegeville Data Center

Our 203,000-square-foot data center located in Collegeville, Pa. is designed to provide the power, cooling, network and security that mission-critical IT environments require.

Backed by a 100% commitment to satisfaction as well as power, bandwidth and network services availability, our Philadelphia - Collegeville data center can accommodate high power densities that hyperconverged infrastructure and other memory-intensive and latency-sensitive applications require. The data center features a 2(N+1) fault-tolerant uninterruptible power supply configuration with 7.2 megawatts of UPS critical load capacity, as well as N+1 redundant, energy-efficient cooling, and connectivity to more than 80 carriers.

Quick Facts

- 203,703-square-foot data center footprint
- 7.20 MW critical load UPS capacity; 2(N+1) UPS redundancy
- N+1 cooling redundancy
- 100% SLA on power, network and bandwidth
- 100 Gbps network backbone, scalable to 400 Gbps
- 5 zone security access

Additional Features

- Migration and capacity planning
- Meeting room and dedicated work areas for customer use
- Office lease space available
- Remote hands support available
- Business continuity and disaster recovery services, solutions and support available
- Public, private, hybrid and compliant cloud solutions, as well as cloud recovery and dedicated servers, available
- Professional services including migration, security and risk management, assessments and audits, as well as performance and network architecture support, available

Facility specifications

Power & Cooling

- 2(N+1) UPS redundancy
- 7.20 MW critical load UPS capacity
- 150 W/SF power density
- N+1 cooling redundancy
- Hot/cold aisle configuration
- 100% power SLA
- 1.7 PUE rating

Compliance

- Annual, independent audits according to: EU-US Privacy Shield framework; SOC 1 Type II, SOC 2 Type II, SOC 3; NIST 800-53; ITAR; SSAE 18
- HITRUST and PCI certification services available
- Regulatory and standards compliance assessment, analysis, consulting and planning services available

24/7 Security

- Physical environment, power delivery, generator and diesel fuel monitoring
- Round-the-clock security and technical staff
- Dual-factor authentication access
- Biometric scanners
- 5-zone security access
- Monitored security cameras and intercom system
- Cage cameras available

Connectivity

- Carrier hotel connectivity
- 100 Gbps network backbone, scalable to 400 Gbps
- 3 Tb total network capacity
- Layer 2 access to 80 on-net carriers
- Carrier-neutral blended, and proactively managed and monitored, IP bandwidth
- Redundant, automatically rerouted connections ranging from 10 Mbps to 10 Gbps
- Proactive Layer 3 and Layer 4 DDoS protection
- 100% network and bandwidth uptime

Flexential Solutions Portfolio



Colocation



Connectivity



Cloud



Disaster Recovery



Managed Services



Professional Services



Portland – Hillsboro 2 Data Center

Our Generation 4 Portland - Hillsboro 2 data center is purpose-built to accommodate power densities of over 1,500 watts per square foot, with 24-foot ceilings, proprietary and highly efficient cooling units and a pressurized raised floor. It also is among the best connected data centers in the world. It is the U.S. point of presence for the New Cross Pacific and Hawaiiki transpacific subsea cables that provide direct, low latency connectivity between the United States and the Asia-Pacific region. Moreover, our network backbone delivers an industry-leading 100 gigabits per second of connectivity, which is scalable to 400 Gbps, as well as carrier hotel connectivity, Layer 2 access to 80 on-net carriers, proactive Layer 3 and Layer 4 distributed denial of service protection and a 100% network and bandwidth uptime commitment. The Portland - Hillsboro 2 data center also has a cloud node on-site to support your hybrid IT needs.

This site also is certified according to several industry and regulatory standards, including the HITRUST CSF and PCI DSS.

Quick Facts

- 242,683-square-foot data center footprint
- 18 MW critical load UPS capacity; Distributed Redundant 4:3 UPS
- N+1 cooling redundancy
- 100% SLA on power, network and bandwidth
- 100 Gbps network backbone, scalable to 400 Gbps
- 5-zone security access

Additional Features

- Cloud node on-site
- Migration and capacity planning
- Meeting room and dedicated work areas for customer use
- Office lease space available
- Remote hands support available
- Business continuity and disaster recovery services, solutions and support available
- Public, private, hybrid and compliant cloud solutions, as well as cloud recovery and dedicated servers, available
- Professional services including migration, security and risk management, assessments and audits, as well as performance and network architecture support, available

Facility specifications

Power & Cooling

- Distributed Redundant 4:3 UPS
- 18 MW critical load UPS capacity
- 1,500 W/SF power density
- N+1 cooling redundancy
- Hot/cold aisle configuration
- 100% power SLA
- 1.3 PUE rating

Compliance

- HITRUST CSF compliant site
- PCI DSS compliant site
- Annual, independent audits according to: EU-US Privacy Shield framework; SOC 1 Type II, SOC 2 Type II, SOC 3; NIST 800-53; ITAR; SSAE 18
- HITRUST and PCI certification services available
- Regulatory and standards compliance assessment, analysis, consulting and planning services available

24/7 Security

- Physical environment, power delivery, generator and diesel fuel infrastructure monitoring
- Round-the-clock security and technical staff
- Dual-factor authentication access
- Biometric scanners
- 5-zone security access
- Monitored security cameras and intercom system
- Cage security cameras available

Connectivity

- Subsea connectivity to Asia-Pacific
- Carrier hotel connectivity
- 100 Gbps network backbone, scalable to 400 Gbps
- 3 Tb total network capacity
- Layer 2 access to 80 on-net carriers
- Carrier-neutral blended, and proactively managed and monitored, IP bandwidth
- Redundant, automatically rerouted connections ranging from 10 Mbps to 10 Gbps
- Proactive Layer 3 and Layer 4 DDoS protection
- 100% network and bandwidth uptime commitment

Flexential Solutions Portfolio



Colocation



Connectivity



Cloud



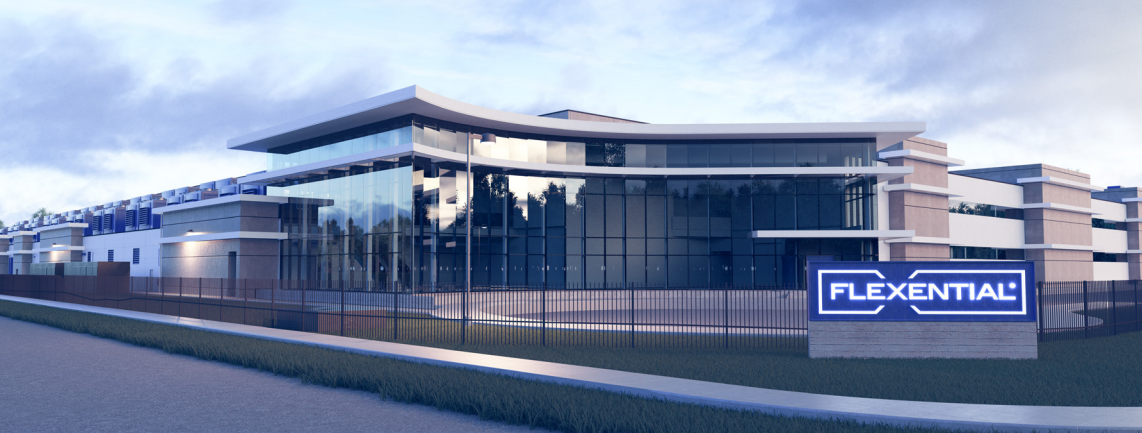
Disaster Recovery



Managed Services



Professional Services



Portland – Hillsboro 3 Data Center

Flexential's Portland-Hillsboro 3 data center is the third—and newest—facility to be added to our Oregon campus, reinforcing Flexential's 20-year commitment to building and operating a highly-connected colocation footprint in the Pacific Northwest.

Groundbreaking is scheduled for Portland-Hillsboro 3 in Summer 2020. Upon completion, Flexential's Hillsboro data center campus will total nearly 700,000 sq. ft.

Strategically located within Hillsboro's Enterprise Zone region, Flexential's Portland data centers provide customers with significant tax benefits in addition to Oregon's zero percent statewide sales tax.

Portland-Hillsboro 3 is included in Flexential's data center campus cross-connect fiber ring, featuring nine Tier 1 carriers with underground fiber to all major U.S. cities, enabling nominal domestic latency.

A second Flexential campus cross-connect fiber ring, scheduled for completion in Q2 2020, will connect 14 existing or planned data centers and provide access to seven trans-Pacific submarine cable systems. This second fiber ring is designed to include an impressive 3,456 strands of fiber optic network, 1,728 strands of which will run between Hillsboro 2 and Hillsboro 3.

Flexential's Portland-Hillsboro 3 will have direct access to Flexential's NAP of the Northwest facility that hosts two high capacity trans-Pacific cables: New Cross Pacific and Hawaiki which connect Hillsboro and Asia Pacific, including Hawaii, Australia, New Zealand, China, South Korea, Taiwan and Japan. Access to additional trans-Pacific subsea cable destinations are planned for the future.

Quick Facts

- 358,000 sq. ft. data center footprint
- 36 MW critical power capacity
- 20 acres located within the Hillsboro Enterprise Zone
- Highest cooling efficiency design in the region
- Commitment to sustainability with a WUE of 0
- Industry-leading PUE
- Located on the Flexential data center campus, the most interconnected campus in the NW, with subsea cable landings for direct connection to APAC
- High density capabilities

Power & Cooling

- Distributed redundant 4:3 UPS system.
- Fault tolerant electrical and mechanical systems
- 36 MW critical load UPS capacity
- 1,500 W/SF power density
- N+2 cooling redundancy
- Hot/cold aisle configuration
- 100% power SLA
- Designed for 1.3 PUE

Compliance

- HITRUST CSF compliant site
- PCI DDS compliant site
- Annual, independent audits according to: EU-US Privacy Shield framework, SOC 1 Tier Type II, SOC 2 Type II, SOC 3; NIST 800-53: ITAR; SSAE 18
- HITRUST and PCI certification services available
- Regulatory and standards compliance assessment, analysis, consulting and planning services available

24/7 Security

- Physical environment, power delivery, generator and diesel fuel infrastructure monitoring
- Round-the-clock security and technical staff
- Dual-factor authentication access
- Biometric scanners
- 4-zone security access
- Monitored security cameras
- Cage security cameras available

Connectivity

- 100 Gbps network backbone, scalable to 400 Gbps
- 3 Tb network capacity
- Layer 2 access to 80 on-net carriers
- Carrier-neutral blended and proactively managed and monitored, IP bandwidth
- Redundant, automatically rerouted connections ranging from 10 Mbps to 10 Gbps
- Proactive Layer 3 and Layer 4 DDoS protection
- 100% network and bandwidth commitment

Flexential Solutions Portfolio



Colocation



Connectivity



Cloud



Disaster Recovery



Managed Services



Professional Services