



Salt Lake City - Downtown data center

Salt Lake City, Utah

With a data center footprint approaching 45,000 square feet, the Salt Lake City - Downtown data center offers ample colocation and connectivity services for any business.

With a cloud node on-site, carrier hotel connectivity and a network backbone featuring an industry-leading bandwidth of 100 gigabits per second, scalable to 400 Gbps, we are exceptionally equipped to support your IT transformation journey and deliver low latency and high capacity for your mission-critical applications. Rely on us for Layer 2 access to 80 on-net carriers, proactive Layer 3 and Layer 4 distributed denial of service protection and a 100% network and bandwidth uptime commitment.

If you are in the healthcare industry or if you process credit card payments online, we are here to help secure, manage and maintain compliance. This site is certified for compliance with several industry and regulatory standards, including the HITRUST CSF and PCI DSS.



Quick facts

- 44,550-square-foot data center footprint
- 2.65 MW critical load UPS capacity; N+1 UPS redundancy
- N+1 cooling redundancy
- 100% SLA on power, network and bandwidth
- 100 Gbps network backbone, scalable to 400 Gbps
- 5-zone security access

**FLEXENTIAL**

Facility specifications

Power & cooling

- N+1 UPS redundancy
- 2.65 MW critical load UPS capacity
- 240 W/SF power density
- N+1 cooling redundancy
- Hot/cold aisle configuration
- 100% power SLA
- 1.5 PUE rating

24/7 security

- Round-the-clock security and technical staff
- Dual-factor authentication access
- Biometric scanners
- 5-zone security access
- Monitored security cameras and intercom system
- Cage security cameras available

Additional features

- Cloud node on-site
- Migration and capacity planning
- Meeting room and dedicated work areas for customer use
- Office lease space available
- Remote hands support available
- Business continuity and disaster recovery services, solutions and support available
- Public, private, hybrid and compliant cloud solutions, as well as cloud recovery and dedicated servers, available
- Professional services including migration, security and risk management, assessments and audits, as well as performance and network architecture support, available

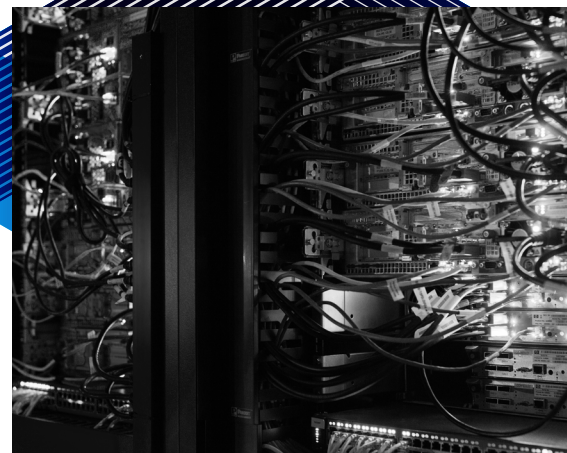


Connectivity

- Carrier hotel connectivity
- 100 Gbps network backbone, scalable to 400 Gbps
- 3 Tb total network capacity
- Layer 2 access to 80 on-net carriers
- Carrier-neutral blended, and proactively managed and monitored, IP bandwidth
- Redundant, automatically rerouted connections ranging from 10 Mbps to 10 Gbps
- Proactive Layer 3 and Layer 4 DDoS protection
- 100% network and bandwidth uptime commitment

Compliance

- HITRUST CSF compliant site
- PCI DSS compliant site
- Annual, independent audits according to: EU-US Privacy Shield framework; SOC 1 Type II, SOC 2 Type II, SOC 3; NIST 800-53; ITAR; SSAE 18
- HITRUST and PCI certification services available
- Regulatory and standards compliance assessment, analysis, consulting and planning services available



Flexential helps organizations optimize IT transformation while simultaneously balancing cost, scalability, compliance and security. With a focus on building trusted relationships, providing valuable support and delivering tailored solutions and reliable performance, Flexential delivers colocation, connectivity, cloud, managed solutions and professional services to 4,200 customers across the U.S. and Canada.

